

Ifo - Sign Basin Compact 770

Smooth, compact wash basin with raised rear edge with a choice of left or right basin.

IFO7752

FEATURES

- 770mm long vitreous china basin
- Fully glazed under and over preventing bacteria growth
- Reverse shape wash bowl increases user area
- Back to wall lip for protection
- Easy clean recessed tap and soap area
- All basin mounting contact surfaces to be sealed with high grade anti-bacterial silicone of appropriate colour
- Satisfies AS1428.1:2009 requirements
- Short 40mm P Trap supplied
- Can be cabinet mounted or wall mounted with brackets (sold separately)

OPTIONS

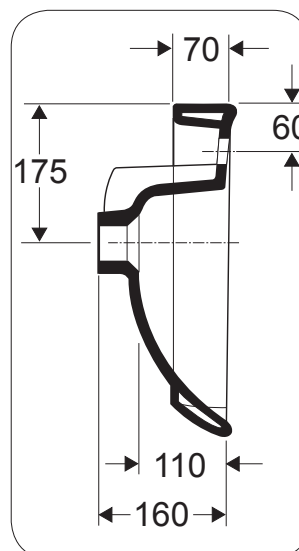
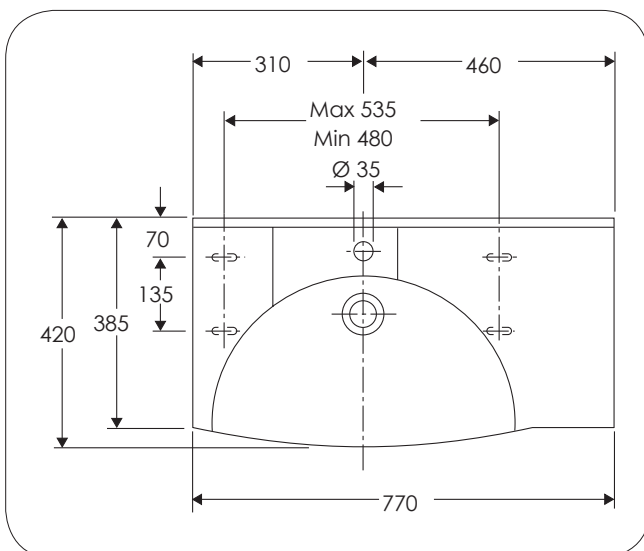
Microtrap Chrome Plated Plastic Finish with Pop-Up **IFO15917**
 Shroud **IFO4346F-770**
 Pair of Brackets **IFO96377**
 Vanity Unit **EVC220**



Pictured here with IFO96377 (bracket) and EVC220 (cabinet) which are available separately

Product Codes

IFO7752	Left Bowl 1 x Taphole 1 x Overflow
IFO7750-100	Left Bowl No Taphole No Overflow
IFO7752-100	Left Bowl 1 x Taphole No Overflow



Version: Nov 15

Call 1300 369 273
www.enware.com.au/ifo

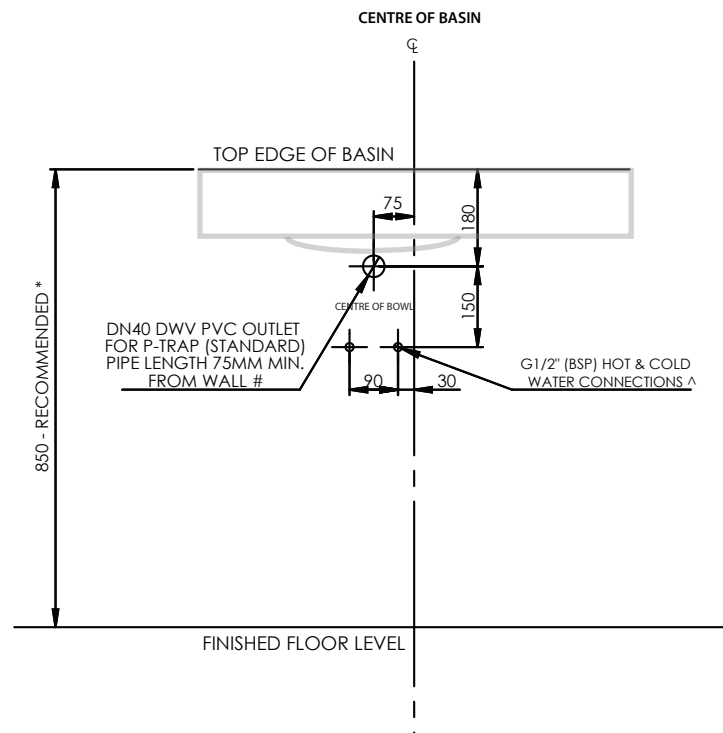
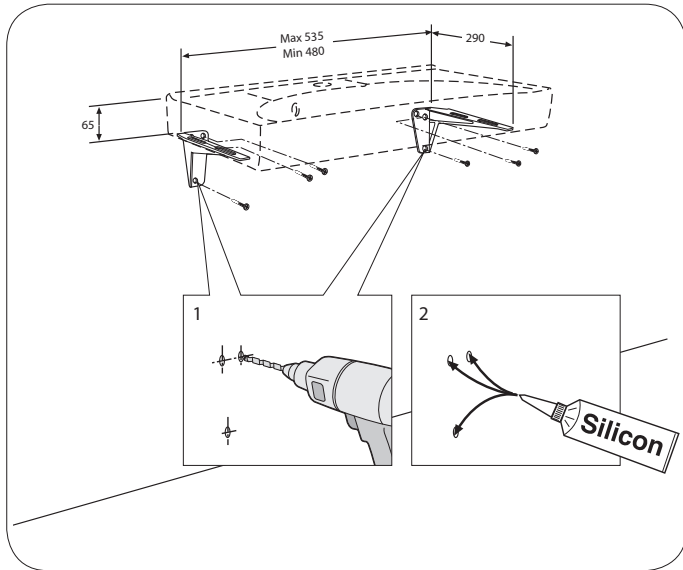
Enware Australia Pty Limited
 9 Endeavour Rd Caringbah NSW 2229 Australia
 Ph: 02 8536 4000 Fax: 02 8556 4055



ENWARE
 installing confidence

Ifo - Sign Basin Compact 770

IF07752



* 865mm (AUSTRALASIAN HEALTH FACILITY GUIDELINES), 800 - 830mm (AS1428.1-2009)

DN40 DWV PVC OUTLET FOR 40mm SHORT P-TRAP (IFO14954) AND PLUG & WASTE (IFO14934) SUPPLIED AS STANDARD ON ALL IFO BASINS. PIPE LENGTH 75mm MIN. FROM WALL

^ RECOMMENDED SET OUT FOR 1/2" BSP HOT & COLD WATER POINTS IF OPTIONAL SHROUD IS USED
TYP=TYPICAL (THE SAME ON THE OTHER SIDE)

Version: Nov 15

Call 1300 369 273
www.enware.com.au/ifo

Enware Australia Pty Limited
9 Endeavour Rd Caringbah NSW 2229 Australia
Ph: 02 8536 4000 Fax: 02 8556 4055

ENWARE
installing**confidence**

Ifo - Sign Basin Compact 770 Right Bowl

Smooth, compact wash basin with raised rear edge with a choice of left or right basin.

IF07762

FEATURES

- 770mm long vitreous china basin
- Fully glazed under and over preventing bacteria growth
- Reverse shape wash bowl increases user area
- Back to wall lip for protection
- Easy clean recessed tap and soap area
- All basin mounting contact surfaces to be sealed with high grade anti-bacterial silicone of appropriate colour
- Satisfies AS1428.1:2009 requirements
- Short 40mm P Trap supplied
- Can be cabinet mounted or wall mounted with brackets (sold separately)

OPTIONS

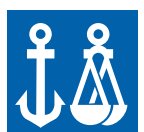
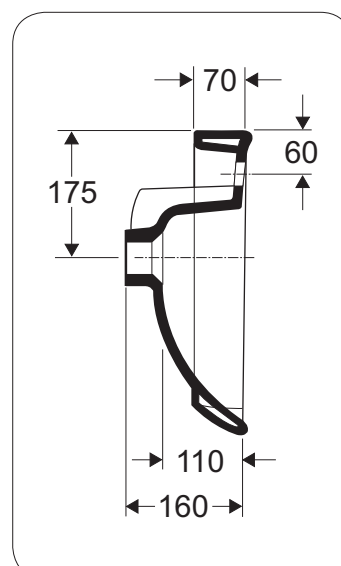
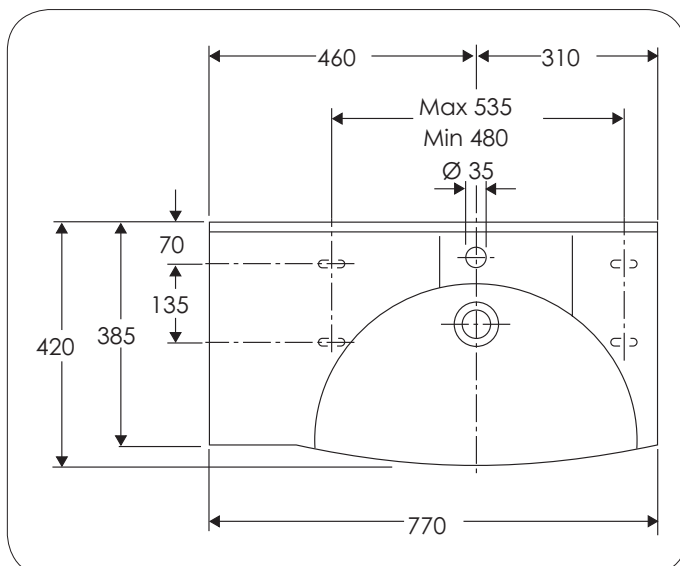
Microtrap Chrome Plated Plastic Finish with Pop-Up Shroud **IF015917**
 Pair of Brackets **IF04346F-770**
 Vanity Unit **IF096377**
EVC220



Pictured here with IF096377 (bracket) and EVC220 (cabinet) which are available separately

Product Codes

IF07762 Right Bowl 1 x Taphole 1 x Overflow
IF07760-100 Right Bowl No Taphole No Overflow
IF07762-100 Right Bowl 1 x Taphole No Overflow



DNV
 Certificate No. 2004-SKM-AE-825
 ISO 14001:2004
 Certificate No. 2004-SKM-AQ-2054
 ISO 9001:2000

Version: Nov 15

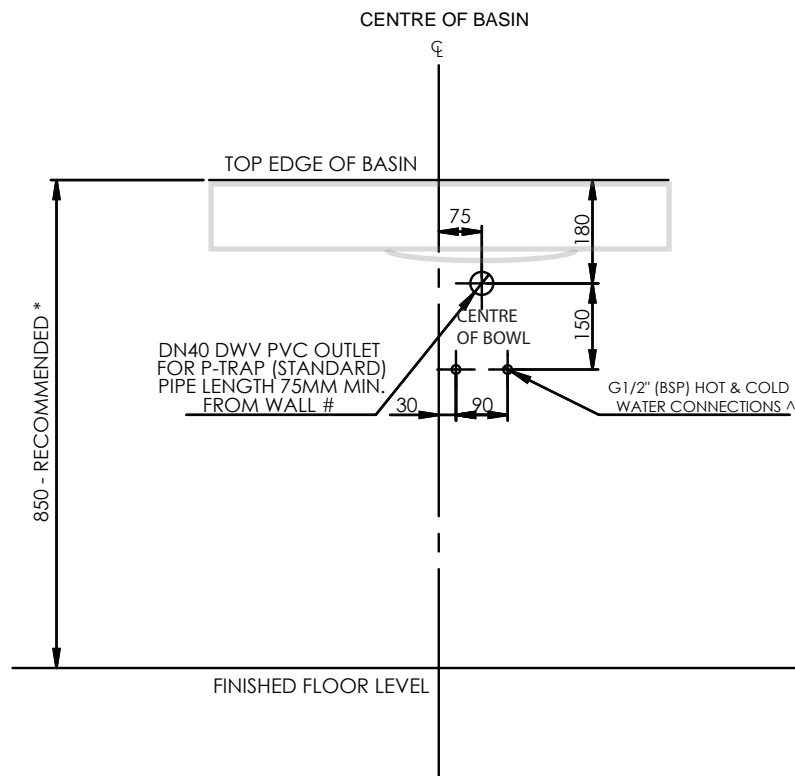
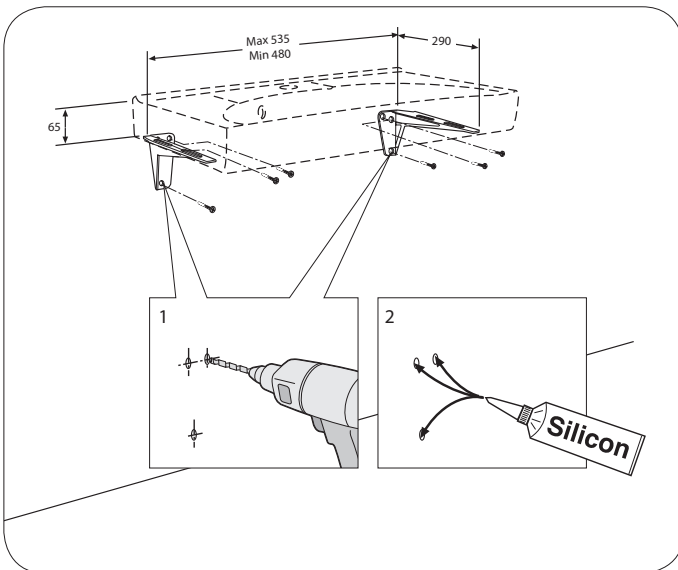
Call 1300 369 273
www.enware.com.au/ifo

Enware Australia Pty Limited
 9 Endeavour Rd Caringbah NSW 2229 Australia
 Ph: 02 8536 4000 Fax: 02 8556 4055

ENWARE
 installing confidence

Ifo - Sign Basin Compact 770 Right Bowl

IF07762



* 865mm (AUSTRALASIAN HEALTH FACILITY GUIDELINES), 800 - 830mm (AS1428.1-2009)

DN40 DWV PVC OUTLET FOR 40mm SHORT P-TRAP (IFO14954) AND PLUG & WASTE (IFO14934)
SUPPLIED AS STANDARD ON ALL IFO BASINS. PIPE LENGTH 75mm MIN. FROM WALL

^ RECOMMENDED SET OUT FOR 1/2" BSP HOT & COLD WATER POINTS IF OPTIONAL SHROUD IS USED

Version: Nov 15

Call 1300 369 273
www.enware.com.au/ifo

Enware Australia Pty Limited
9 Endeavour Rd Caringbah NSW 2229 Australia
Ph: 02 8536 4000 Fax: 02 8556 4055

ENWARE
installing**confidence**