



**BEFORE INSTALLATION: PLEASE CHECK ALL COMPONENTS CAREFULLY. IF COMPONENTS ARE INCORRECT, FAULTY OR DAMAGED, DO NOT PROCEED WITH INSTALLATION. CONTACT FIENZA IMMEDIATELY. INSTALLATION IS ACCEPTANCE OF GOODS AND WILL VOID WARRANTY.**

## SHELF INSERTS

### For Undershaft Mirror Cabinets

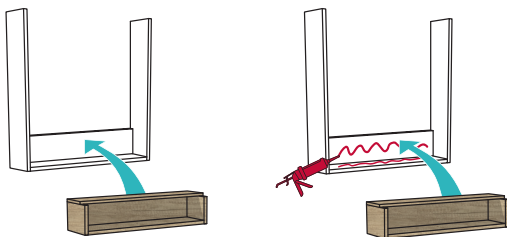
The shelf insert can be added to your undershaft mirror cabinet during or after construction of the cabinet. Select one of the options below for installation.



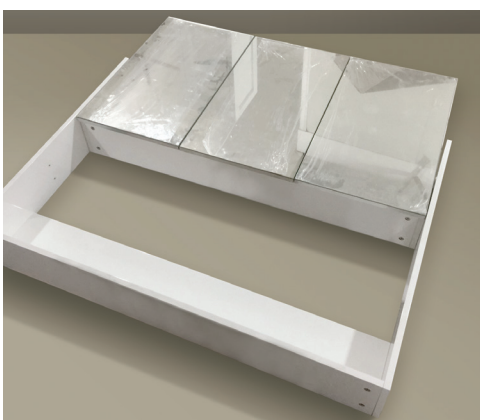
#### Installation while constructing Cabinet

Refer to Step 4 of the installation instructions supplied with your undershaft panel set.

At the start of this step, place the insert into the existing undershaft recess as per the diagram below.



The insert can be fitted loose for non-permanent installation, or glued in permanently.



Once the shelf insert is in place, lay the panels flat on the floor, and slide the cabinet in between the sides. Continue with Step 5 of the undershaft installation instructions.

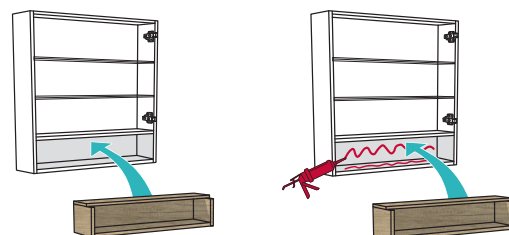
#### Installation after Cabinet construction

If the cabinet has already been constructed or mounted to the wall, it is still possible to install the insert.

Start by removing all mirror doors on the cabinet. Take care not to drop the door as it may break the mirror glass. Seek assistance from another person to help you if needed. Push the back of both hinges simultaneously to remove each door.



Once the doors have been removed, insert the shelf as shown in the diagram below. The insert can be fitted loose for non-permanent installation, or glued in permanently.



Replace the doors by pushing the hinges back into place until they click in and are secure.