

## Care 800 Invisi Series II®

### 4.5/3 litre Dual Flush Toilet Suite with Caroma Care 800 Vitreous China Wall Faced Pan and Invisi Series II® Cistern



The 4.5/3 dual flush **Care 800 Invisi Series II®** suite is designed to provide a raised seat height of between 460-480mm for accessible applications . With a pan projection of 800mm  $\pm 10$ mm, the suite can be easily installed flush against the wall to meet compliance requirements to AS 1428.1-2009 Amd.1. Therefore the Care 800 Invisi Series II® suite does not require a wall extension to conceal the plumbing, saving installation cost. Concealed cistern and plumbing fittings provides ease of cleaning, high infection control and performance matched components to maximise flushing efficiency. The pan connection system includes the patented Caroma Uni-Orbital® connector that extends to any position in a 50mm radius, unlike traditional connectors that only move backwards and forwards. The setout range is from 140mm – 335mm with a recommended setout of 190mm. If a setout range of 90-140mm is required, the optional Extended Uniconnector can be used, however, this will not allow for sideways adjustment.

#### Important :

**Reference must be made to AS 1428.1-2009 with current amendments to determine circulation space, grab rail and installation requirements. The dimensions in this sheet may change with amendments to the standard.**

#### Pan:

**Care 800** 4.5 litre full flush wash down box rim type.

#### Traps:

Universal trap.

#### Inlet:

50mm back inlet. A 40mm kee-seal is available.

#### Cisterns:

**Invisi Series II®** cistern – suitable for inwall, induct and in ceiling applications.

**Important: Working pressure minimum 30kPa to maximum 1000kPa flow pressure. Rain water tank compliant.**

#### Buttons:

Sold separately: See Section 4 - CARE BUTTONS for further details.

#### Seats:

**Pedigree II Care** single flap, **Caravelle Care** single flap, **Colani** single flap and **Colani** double flap seats\* available in Caroma White (W), Sorrento Blue (SB) and Anthracite Grey (AG). See Section 3 - SEATS for further details.

#### Position of the Pan:

For wheel chair access the installed pan must be a minimum of 800  $\pm 10$ mm from the front of the pan to the finished wall and provide a seat height of 460 to 480mm.

#### Position of the Cistern:

The pan is suitable for installation with concealed cisterns providing the circulation space requirement is maintained. The height of the push button must be no greater than 1100mm to the top of the push button and positioned within the push button zone or on the centre line of the pan.

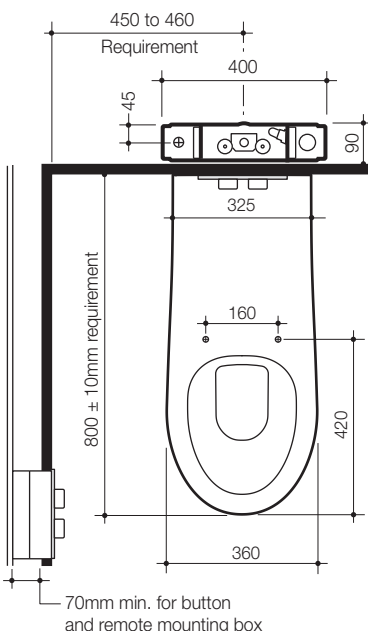
#### Colour:

Pan available in white only.

#### Installation:

The installation of the toilet suite shall be in accordance with the normal minimum drainline grade requirements in AS/NZS 3500.2.

**Note: The projection requirements detailed on this illustration are for wheel chair access only.**

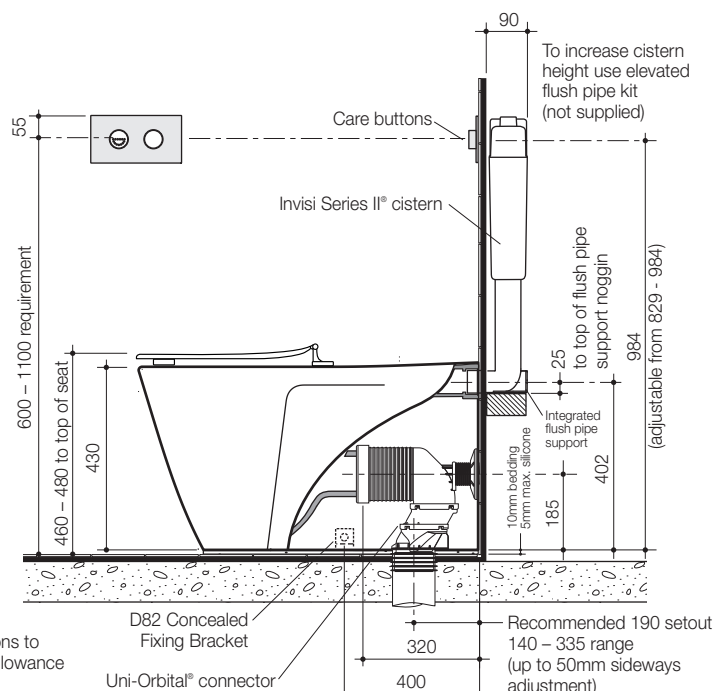


**Note :** All height dimensions to underside of pan, make allowance for mortar bedding.

#### Care 800 Invisi Series II®

##### Toilet Suite with Seat:

	Code No.	Seat colour:
Pedigree II Care Single Flap Seat	718200	W, SB or AG
Colani Single Flap Seat	718210	W, SB or AG
Caravelle Care Single Flap Seat	718230	W, SB or AG
Colani Double Flap Seat	718120	W or SB



Suitable for installation to comply to Australian Standard AS 1428.1-2009 Design for access and mobility