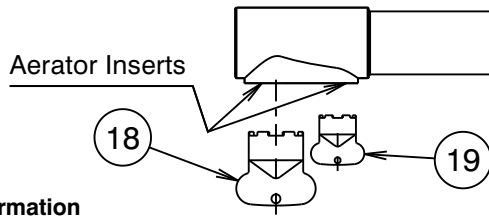




CAROMA

COMPASS - DUAL HANDLE FILTERED WATER MIXER

PLUMBERS INSTALLATION INSTRUCTIONS - MIXER TAP



Important Information

- * Not suitable for gravity feed systems.
 - * Mixer Tap is fitted with a flow regulated aerator insert.
 - * Isolating stop taps must be fitted to the hot & cold water supply connections (part No. 842018C - Mini cistern 1/4T)
 - * All pipework must be thoroughly flushed prior to installation, as foreign materials may block the flow regulating device and reduce the flow of water.
- Note: Aerator inserts must be retightened to prevent removal by hand.**

Mixer Tap Installation

- 1) Ensure seal (10) is installed into groove in base flange (9) of mixer body (8).
- 2) *Flexible Tail Mixer Connections:* Apply suitable lubricant to 'O' rings (15). Fit flexible tail (16) (with red indication) into hole marked as 'H'. Hand tighten the tail, ensuring the 'O' ring (15) has fully entered the sealing bore to provide a watertight joint. Fit other flexible tail (with blue indication) into remaining hole (marked 'C') in a similar manner.
- 3) Insert the inlet connection end (17) of each flexible tail (16) through the hole in the deck. Insert threaded sleeve of mixer body (8) into deck hole. Fit rubber washer (11), followed by metal washer (12), over the threaded sleeve of the body (8) as shown (Fig. 1). Screw the nut (13) onto threaded sleeve until it contacts metal washer (12) and the rubber washer (11) has contacted the underside of the deck. Tighten two screws (14) equally until mixer assembly is clamped firmly to the deck.
- 4) *Flexible Tail Inlet Connections:* Connect the flexible tails (16) to the hot and cold isolating stop taps, hand tighten the connecting nut (17) until rubber cone contacts the sealing face of the connection end, then tighten a further one turn to provide a watertight joint.
Important: Flexible tails must not be kinked, twisted or in tension when installed. (Minimum Bend Radius:- 50mm) Do not install flexible tails where subject to ultra violet light.

Replacing Cartridge

- 1) Turn off hot and cold water supplies.
- 2) Using a 2.5mm allen key (3) loosen grub screw (2) and remove handle (1). Remove cap (4) taking care not to damage the finish. Unscrew nut (5) then lift out old cartridge (6).
- 3) Ensure inside face of mixer body (8) is clean. Check that seal (7) is in position in base of new cartridge (6). Fit new cartridge (6) into mixer body (8), taking care that two lugs on base of cartridge (6) fit into mating holes in mixer body (8).
- 4) Screw on nut (5). **Important:** Nut (5) should be tightened to a torque of 10 Nm.
- 5) Replace cap (4), tightening by hand. Fit handle (1) taking care that it is pushed fully onto cartridge spindle, then tighten grub screw (2).
- 6) Turn on water supplies and check operation.

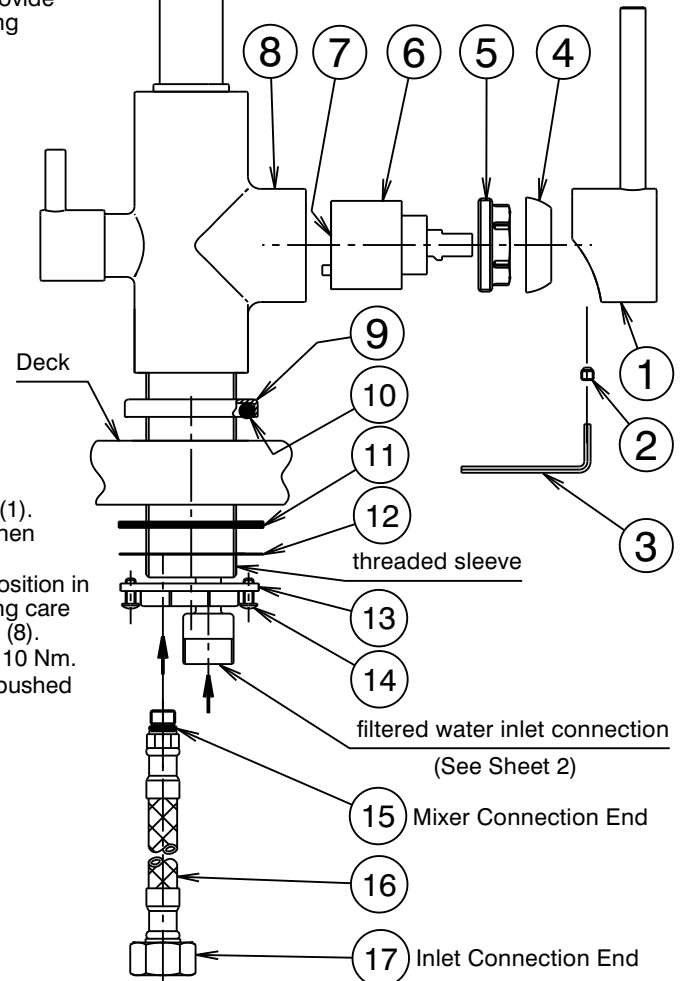


Fig.1

Removing Aerator Inserts

- 1) Aerator inserts can be removed with spanners (18, 19) provided.
- 2) Deposits of lime can be removed by washing in a vinegar solution.
- 3) When replacing aerator insert, be careful that thread is engaged correctly and 'O' ring is not damaged as it enters the bore. Tighten securely (to prevent removal by hand) using spanner (18,19).

| IMPORTANT | |
|--|--|
| Pressure & Temperature Requirements. | |
| Mixer tap : | |
| • Hot and cold water inlet pressures should be equal. | |
| • Static inlet pressure range : 150-1000 kPa | |
| • New Regulation:- 500 kPa maximum static pressure at any outlet within a building. (Ref. AS/NZS 3500.1) | |
| • Maximum hot water temperature : 80°C. (In accordance with AS 3499) | |
| Filtered water tap : | |
| • Static inlet pressure range : 250-850 kPa | |
| • New Regulation:- 500 kPa maximum static pressure at any outlet within a building. (Ref. AS/NZS 3500.1) | |
| • Water temperature range : 2 - 38°C. | |
| Deck Requirements | |
| • Deck thickness : 60mm maximum | |
| • Tap body hole (in deck) : Ø34-36mm | |



COMPASS - DUAL HANDLE FILTERED WATER MIXER

CAROMA PLUMBERS INSTALLATION INSTRUCTIONS - FILTERED WATER TAP

Important Information

- * The cistern tap supplied is fitted with dual check valves. It is a legal requirement that a check valve be installed prior to the water filter inlet.
- * All pipework must be thoroughly flushed prior to installation, as foreign materials may block the water filter and reduce the flow of water.
- * If water pressure exceeds 850 kPa a pressure limiting valve must be installed prior to the filter system.

Filtered Water Installation

1) CONNECTING TO A SEPARATE COLD WATER SUPPLY (Fig. 2)

A cold water supply located beneath the deck in proximity to the filter tap must be provided. If there is no supply point available your plumber should install a cold water line with a threaded connection as shown in Fig. 2. If there is an existing cold water supply point available, turn off the water at the meter tap & remove the existing stop tap. Apply thread tape to the threaded nipple (26) & screw on cistern tap with dual check valves (25) (Fig. 1) & tighten.

CONNECTING TO AN EXISTING COLD WATER SUPPLY (Fig. 3)

If there is an isolating stop tap supplying cold water to the existing tapware in proximity to the filter tap, the cistern tap with dual check valves (25) can be connected as shown in Fig. 3. Turn off the isolating stop tap (27)* & disconnect the attached fittings. Apply thread tape to all threaded connections and assemble the fittings & cistern tap with dual check valves (12) as shown. **Note:** These fittings are not supplied. Reconnect the existing cold water supply line to the brass nipple.

- Mount the filter head (22) using suitable screws through the holes in it's bracket, giving consideration to the following:-
 - Two flexible hoses (21) & (24) of different lengths are supplied. Try & position the unit to accommodate these lengths.
 - An allowance of 290mm clearance under the filter head (9) is needed for removal and replacement of cartridge (23)
- Engage the bayonet on top of the cartridge (23) with the mating hole in the filter head (22) & turn clockwise to lock.
- Apply thread tape to the male thread on each flexible hose (21 & 24). Connect the flexible hoses (21 & 24) as follows, taking care that they are not kinked, twisted or in tension as they are tightened. **Important:** DO NOT OVERTIGHTEN.
 - Screw the male threaded end of the hose selected into the inlet of the filter head assembly. Connect the other end to the cistern tap with dual check valves (25)
 - Take the remaining hose & screw the male threaded end into the outlet of the filter head assembly. Connect the other end to the inlet tail connector (20) of the mixer (8).
 - Check that all fittings are firmly tightened & flow direction through filter head is correct.

5) Turn on cistern tap (25)

then filtered water control (28) & let water run for 3 minutes to purge air from the system. Check system for leaks.

Note: Flow of water from filter tap can be reduced by adjusting cistern tap (25).

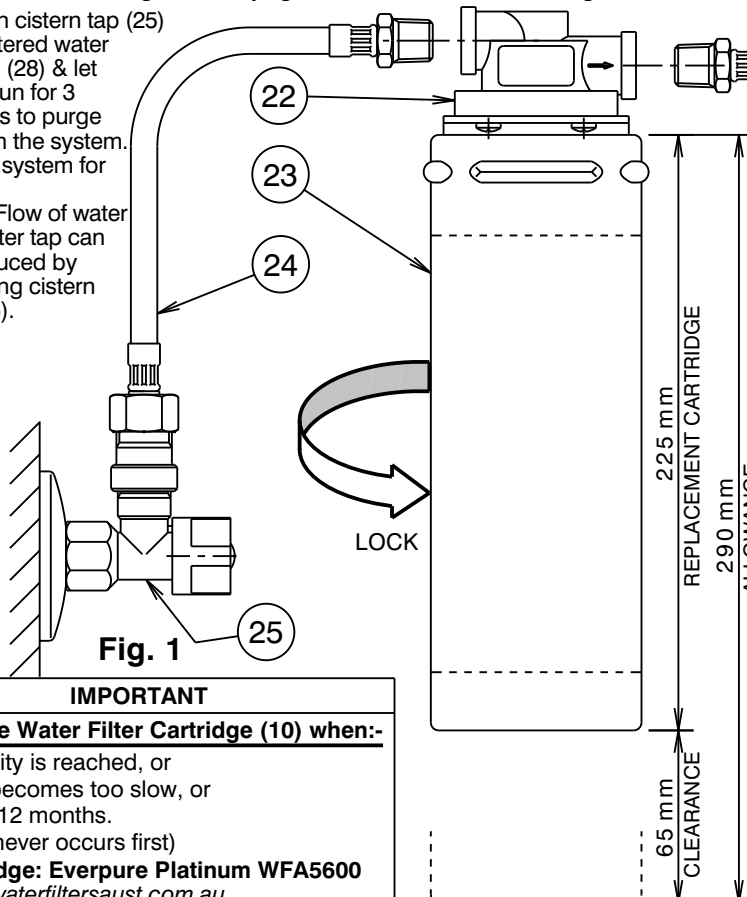


Fig. 1

IMPORTANT

Replace Water Filter Cartridge (10) when:-

- Capacity is reached, or
 - Flow becomes too slow, or
 - Every 12 months.
- (Whichever occurs first)

Cartridge: Everpure Platinum WFA5600
www.waterfiltersaust.com.au

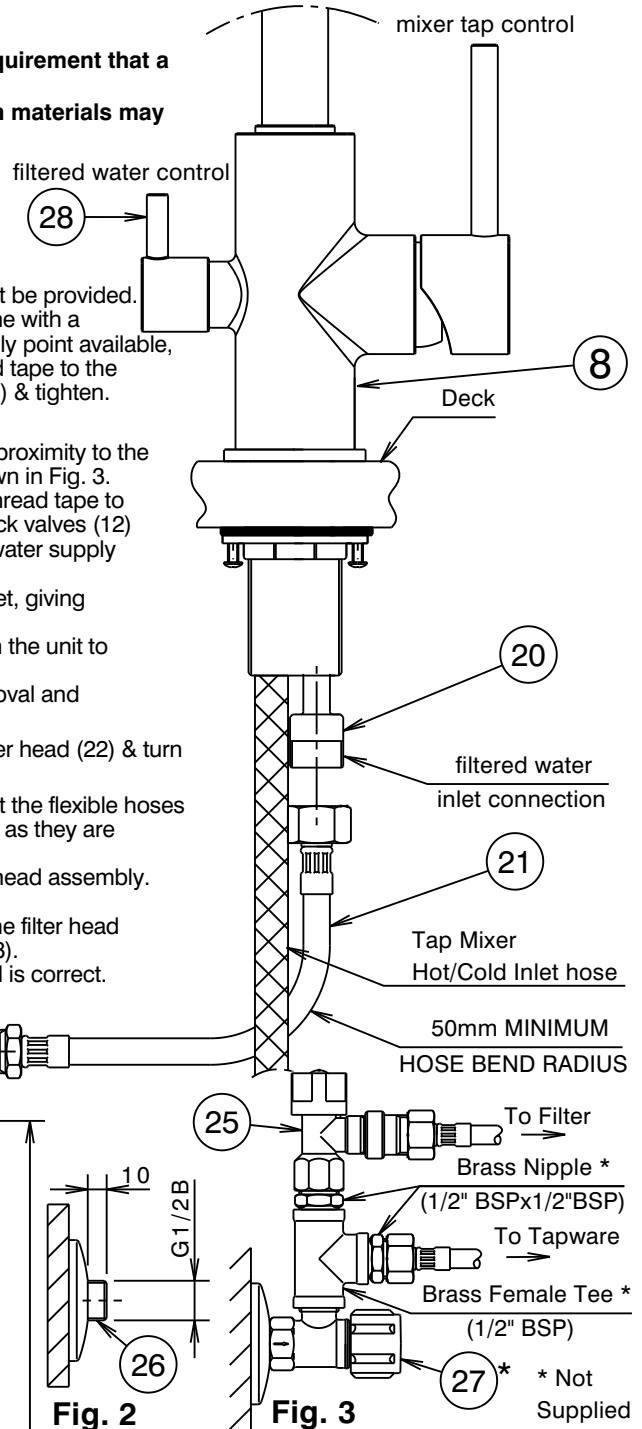


Fig. 2

Fig. 3

IMPORTANT

Pressure & Temperature Requirements.

Mixer tap :

- Hot and cold water inlet pressures should be equal.
- Static inlet pressure range : 150-1000 kPa
New Regulation:- 500 kPa maximum static pressure at any outlet within a building. (Ref. AS/NZS 3500.1)
- Maximum hot water temperature : 80°C.
(In accordance with AS 3499)

Filter tap :

- Static inlet pressure range : 250-850 kPa
New Regulation:- 500 kPa maximum static pressure at any outlet within a building. (Ref. AS/NZS 3500.1)
- Water temperature : 2° - 38°C.

(SHEET 2 OF 2)

IS1278C(08/17)