



PHOENIX

SPECIFICATIONS

FESTIVAL

WALL SINK SET

PRODUCT CODE: 432 CHR
FINISH: CHROME
WELS: 3 STAR - 8.0 LT/MIN

INFORMATION:

TEMPERATURE RATING: MIN 1° - MAX 75°
PRESSURE RATING: MIN 150 kPa - MAX 500 kPa

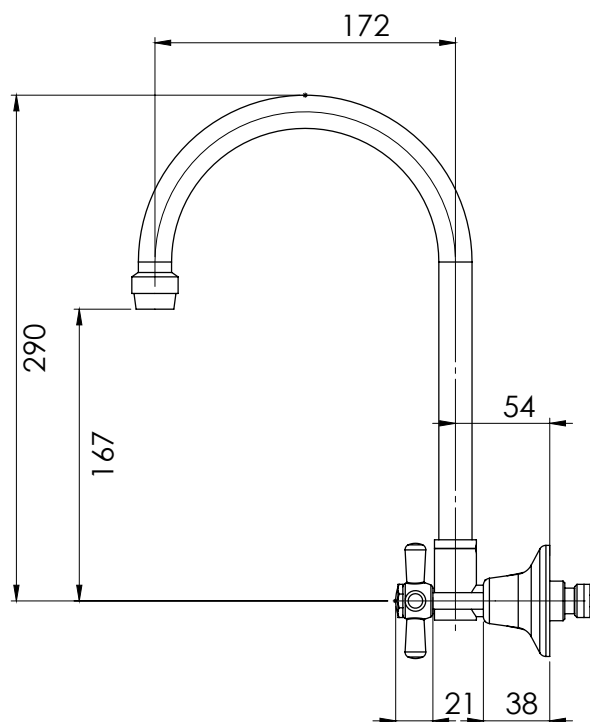
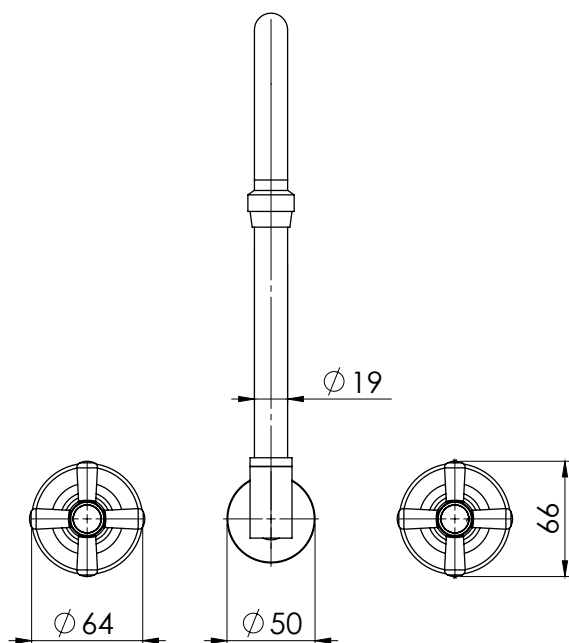


AVAILABLE IN:



CHROME

FOR MORE INFORMATION VISIT
www.phoenixtapware.com.au



PLEASE [CLICK HERE](#) TO VIEW FULL WARRANTY

While we aim to ensure the specifications shown are correct at time of printing, Phoenix Tapware reserves the right to make modifications without prior notice. Always use the physical product measurements for mark-ups and roughing-in as the line drawing shown may differ from the actual product over time. All measurements are shown in millimetres.

www.phoenixtapware.com.au
03 9780 4200



PHOENIX

SPECIFICATIONS

FESTIVAL

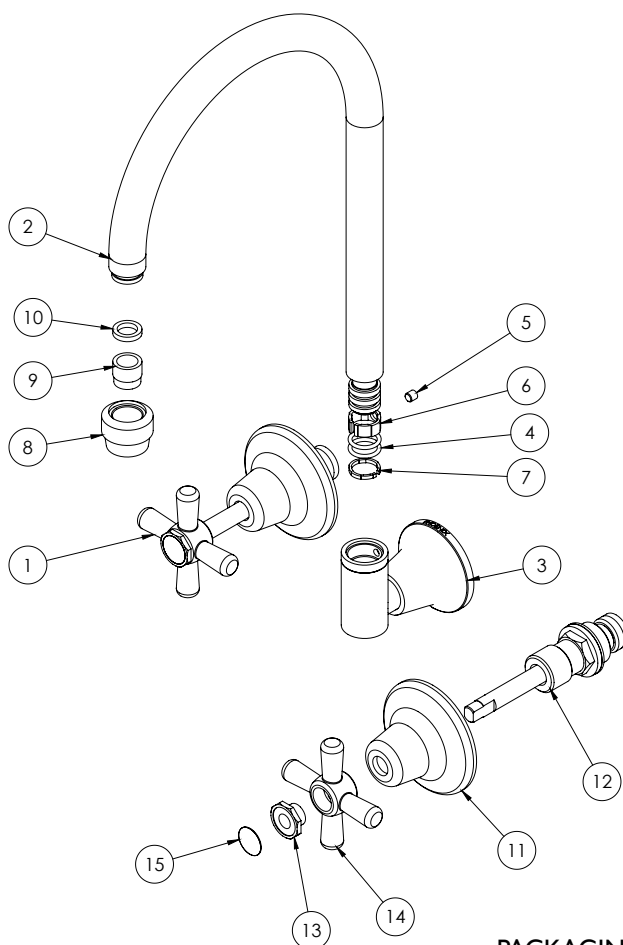
WALL SINK SET

PRODUCT CODE: 432 CHR
FINISH: CHROME
WELS: 3 STAR - 8.0 LT/MIN



PARTS LIST

1. TAP ASSEMBLY
2. SPOUT
3. SINK SWIVEL FLANGE
4. O-RING
5. GRUB SCREW M5X5
6. SPOUT BEARING LARGE
7. SPOUT BEARING SMALL
8. AERATOR RETAINER
9. AERATOR
10. AERATOR GASKET
11. WALL TOP FLANGE
12. SPINDLE
13. SPINDLE LOCKNUT
14. TAP HANDLE
15. HOT/COLD DISC



MAINTENANCE AND CARE:

- All surfaces should be cleaned with mild liquid detergent or soap and water.
- Do not use cream cleaners or citrus based cleaning products, as they are abrasive.
- Use of unsuitable cleaning agents may damage the surface. Any damage caused in this way will not be covered by warranty.

PACKAGING INCLUDES

- 1 x Wall outlet
- 1 x Hot tap
- 1 x Cold tap
- 1 x Installation kit
- 1 x Installation instructions
- 1 x Warranty card

PLEASE [CLICK HERE](#) TO VIEW FULL WARRANTY

While we aim to ensure the specifications shown are correct at time of printing, Phoenix Tapware reserves the right to make modifications without prior notice. Always use the physical product measurements for mark-ups and roughing-in as the line drawing shown may differ from the actual product over time. All measurements are shown in millimetres.

www.phoenixtapware.com.au
03 9780 4200