

CAROMA URBANE II - BATH/SHOWER MIXER WITH DIVERTER

(RECTANGULAR COVER PLATE - TRIM KIT)

PLUMBERS INSTALLATION INSTRUCTIONS

Important Information

- * Trim kit (1-12) & body kit (13-16) are supplied in separate boxes.
- * Trim kit items (1), (2), (5), (6), (7), (8) & (12) are changeable to different trim kit colour finishes available.
- * Brazed connections should NOT be made directly onto the mixer, as excessive heat will cause permanent damage.
- * Final install must be checked at rough-in stage (step 1).
- * All pipework must be thoroughly flushed prior to installation
- * Tile adhesive/grout etc. must not interfere with the removal of the protective sleeves and installation of the trim components.

Installation (Fig. 1 & 2)

- 1) **Body kit:** Fit mixer body (15) onto a suitable mounting plate or noggin in the wall and secure using screws through the holes in its base. When facing the mixer, the connections should be as follows : Hot water inlet connection 'H' to the left. Cold water inlet connection 'C' to the right. Outlet to shower 'S', vertically upwards. Outlet to bath 'B', vertically downwards. Check all connections for leaks & the tap for correct operation.

Important :

- * Mixer body (15) must be installed square to wall/tile face, to ensure cover plate (5) sits flush and vertical.
 - * To avoid damaging the decorative finish, do not remove the protective caps until installation has been completed.
- 2) **Trim kit:** Remove protective caps from mixer body(15) & diverter(16) and make sure the external surfaces of mixer body (15) and diverter (16) are clean. Apply lubricant on the 'O'-rings, then slide sleeve (7) (with WaterMark marking underneath) over mixer body (15) up to the shoulder as shown. Screw cap (6) onto the thread of nut (13) and hand tighten to secure the sleeve (7). Slide the sleeve (12) over diverter (16) (with the hole underneath) up to the shoulder as shown.
 - 3) Apply a suitable clear sealant to the back edge of the cover plate (5) leaving an unsealed section at the bottom for drainage. Carefully slide the cover plate (5) (fitted with 'O' rings) evenly onto diverter sleeve (12) and mixer body sleeve (7). Push the cover plate (5) firmly against the wall/tile face. Wipe/clean excess sealant from the trim surfaces & the wall/tile face (Fig. 1).
 - 4) Fit handle (1) taking care that it is pushed fully onto cartridge stem, then tighten grub screw (4) using the 2.5mm allen key (3). Fit plug (2), taking care not to damage the decorative finish.
 - 5) Using the knob (8) to engage the spindle of the diverter cartridge, rotate the spindle anti-clockwise to the bath position (Fig.4). Remove the knob (8) then insert the washer (9) followed by 'O'-ring (10) into the groove of the knob (8) as shown (Fig.3). Fit the knob (8) onto the spindle of the diverter cartridge with the lever pointing downwards, as shown. Rotate the sleeve (12) to align the hole with the threaded hole in the diverter cartridge then insert the retaining screw (11) and tighten. If necessary, rotate the sleeve (12) to conceal the screw (11) so the hole is underneath. **Note:** To deliver water to the shower outlet, rotate the diverter knob (8) clockwise to the **vertically up** position (Fig.4). To deliver water to the bath outlet, rotate the diverter knob (8) anti-clockwise to the **vertically down** position.

IMPORTANT

Pressure & Temperature Requirements.

- Hot and cold water inlet pressures should be equal.
- Static inlet pressure range : 150 -1000 kPa
New Regulation :-500 kPa maximum static pressure at any outlet within a building. (Ref. AS/NZS 3500.1)
- Maximum hot water temperature : 80°C.

Installation Requirements.

- The installing plumber is responsible for waterproofing all penetrations for Taps in Shower areas at installation by a proprietary flange system or a sealant.(Ref AS3740)

Replacing Cartridge (Fig. 2)

- 1) Turn off hot and cold water supplies.
- 2) Carefully remove plug (2). The 2.5mm allen key (3) can be inserted in the gap under the handle to push out the plug (2) then to loosen grub screw (4) before removing handle (1). Unscrew cap (6) taking care not to damage the decorative finish. Unscrew nut (13) then lift out old cartridge (14).
- 3) Ensure inside face of mixer body (15) is clean. Check that seal is in position in base of new cartridge (14). Fit new cartridge (14) into mixer body (15), taking care that two lugs on base of cartridge (14) fit into mating holes in mixer body(15).
- 4) Screw on nut (13). **Important:-** Nut (13) should be tightened to a torque of 10 Nm. Screw cap (6) onto the thread of nut (13) and hand tighten to secure the sleeve (7).
- 5) Fit handle (1) taking care that it is pushed fully onto cartridge stem, then tighten grub screw (4) using the 2.5mm allen key (3). Fit plug (2), taking care not to damage the decorative finish.
- 6) Turn on water supplies and check operation.

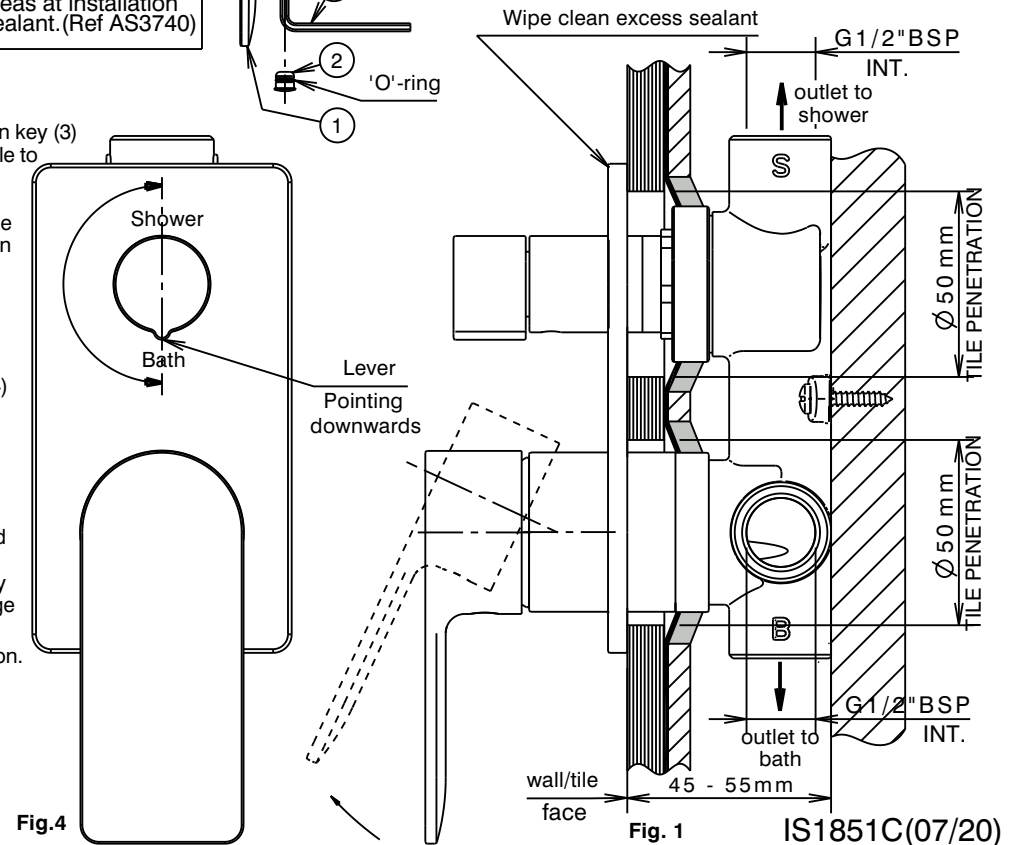
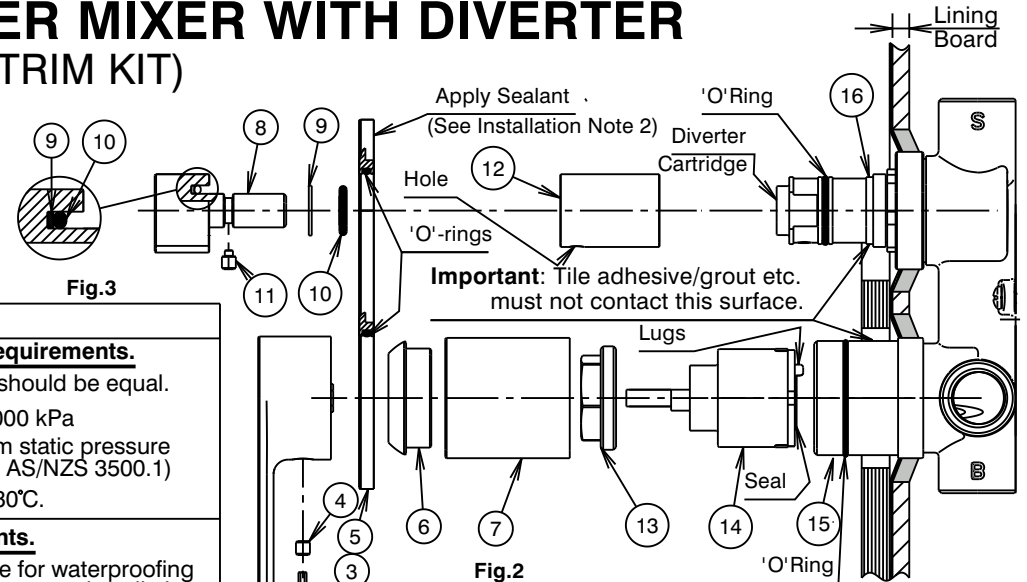


Fig.4

Fig. 1

IS1851C(07/20)