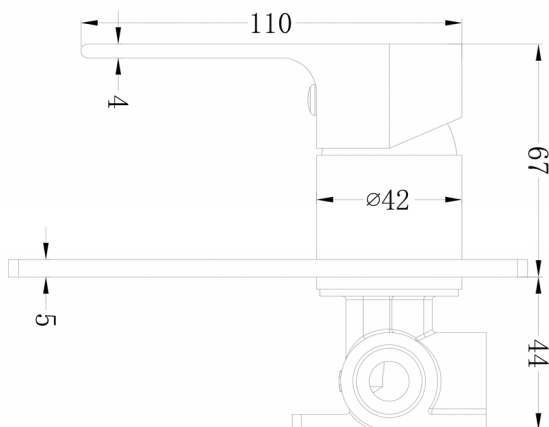
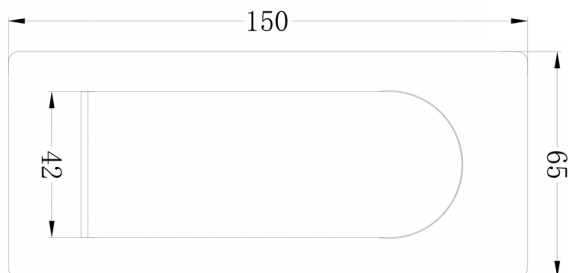


BIANCA SHOWER MIXER



Dimensions are nominal measurements only.

SPECIFICATION

| | |
|--------------------|-----------------------|
| PRODUCT CODE | YSW3215-09 |
| WELS RATING | N/A |
| WATERMARK LICENSE | WM-060073 |
| TEMPERATURE RATING | MIN 1°C-MAX 75°C |
| PRESSURE RATING | MIN 150KPa-MAX 500KPa |

FINISH

| | | |
|---|-------------|-------------------|
|  | NR321509CH | chrome |
|  | NR321509BRG | brushed rose gold |
|  | NR321509MB | matte black |
|  | NR321509BN | brushed nickel |
|  | NR321509GM | gun metal |
|  | NR321509BG | brushed gold |

MAINTENANCE AND CARE

All surfaces should be cleaned with mild liquid detergent or soap and water.

Do not use cream cleaners or citrus based cleaning products, as they are abrasive.

Use of unsuitable cleaning agents may damage the surface. Any damage caused in this way will not be covered by warranty.

PACKAGING INCLUDES

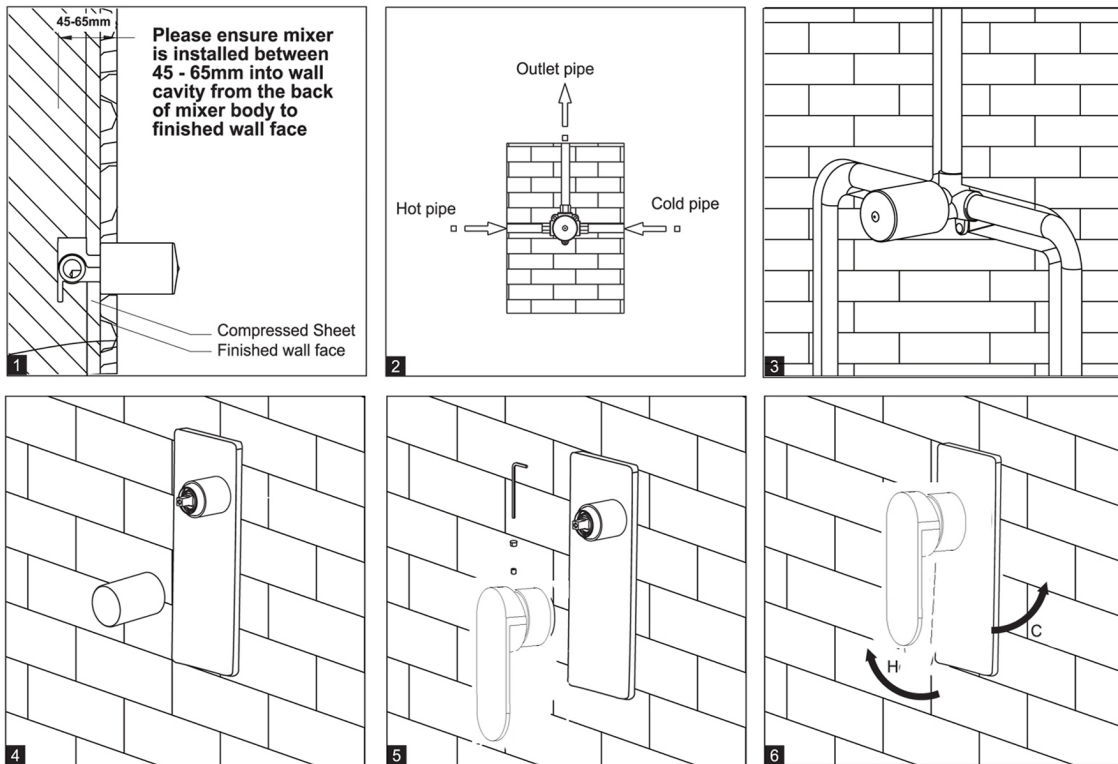
- 1x mixer body
- 1x plate
- 1x handle
- 1x installation kit



Versions: 2019.11.26

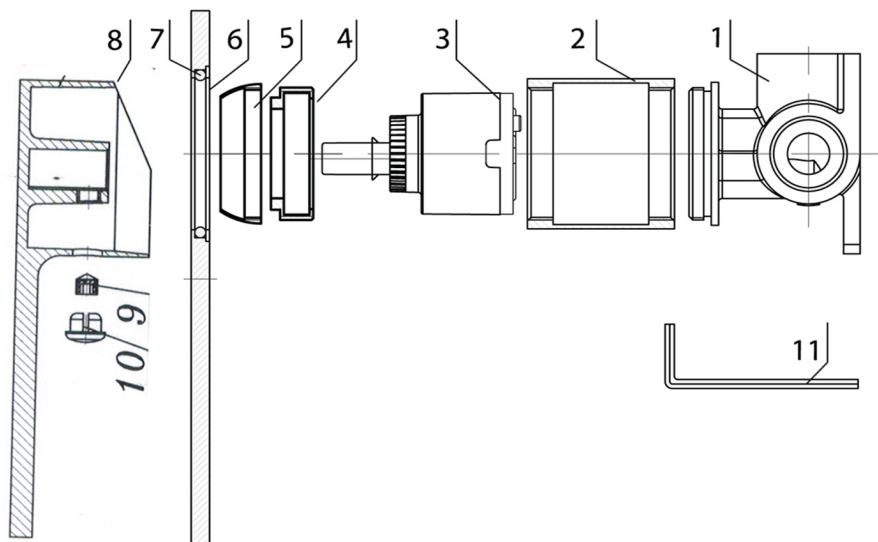
www.nerotapware.com.au

INSTALL INSTRUCTION



1. Install mixer body into wall cavity. Refer to diagram 1 above for setting depth of mixer body in relation to finished wall face.
2. Connect all pipe work as per diagram 2 above.
3. Pressure test for leaks then proceed to waterproof installation.
4. Remove protective sleeve and install decorator plate.
5. Install handle.
6. Operate mixer.

EXPLOSIVE VIEW



1. Body
2. Mixer body
3. Cartridge
4. Retaining nut
5. Cartridge cover
6. Backing plate
7. O-ring
8. Handle
9. Grub screw
10. Cap
11. Allen key