



VANESSA

Poly-Marble Basin-Tops

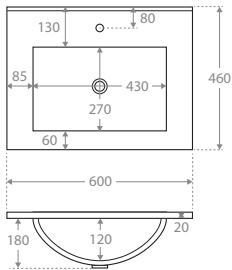
Vanessa basin-tops are made from poly-marble, historically Australia's favourite vanity-top material, which is less prone to distortion than ceramic.

- 20mm thick poly-marble
- Gloss white finish
- Requires 40mm waste, no overflow (not included)



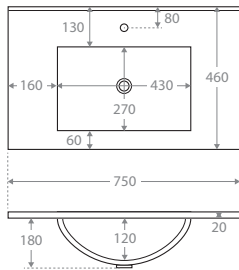
600mm (basin-top only)

- 1 tap hole: **\$150 • 60VAN**
3 tap hole: **\$200 • 60VAN-3**



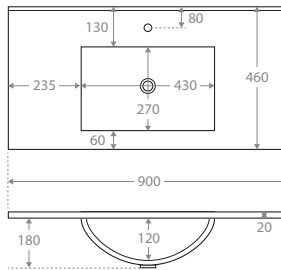
750mm (basin-top only)

- 1 tap hole: **\$160 • 75VAN**
3 tap hole: **\$210 • 75VAN-3**



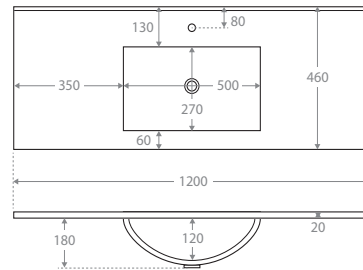
900mm (basin-top only)

- 1 tap hole: **\$185 • 90VAN**
3 tap hole: **\$235 • 90VAN-3**



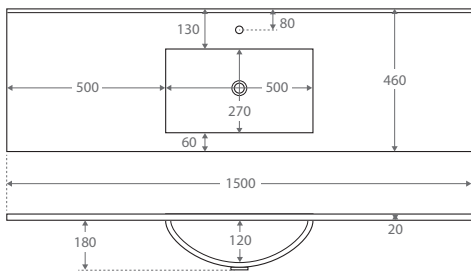
1200mm (basin-top only)

- 1 tap hole: **\$249 • 120VAN**
3 tap hole: **\$299 • 120VAN-3**



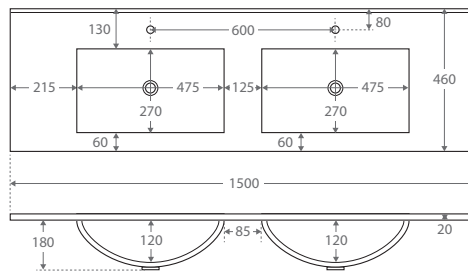
1500mm, Single Bowl (basin-top only)

- 1 tap hole: **\$399 • 150VANS**
3 tap hole: **\$449 • 150VANS-3**



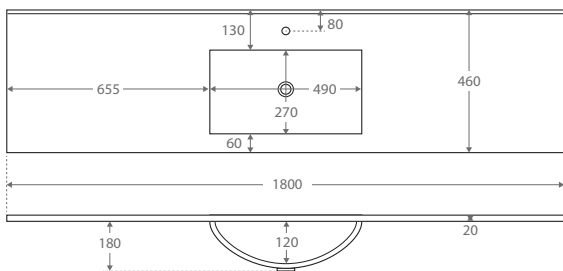
1500mm, Double Bowl (basin-top only)

- 1 tap hole: **\$399 • 150VAND**
3 tap hole: **\$449 • 150VAND-3**



1800mm, Single Bowl (basin-top only)

- 1 tap hole: **\$699 • 180VANS**
3 tap hole: **\$749 • 180VANS-3**



1800mm, Double Bowl (basin-top only)

- 1 tap hole: **\$699 • 180VAND**
3 tap hole: **\$749 • 180VAND-3**

