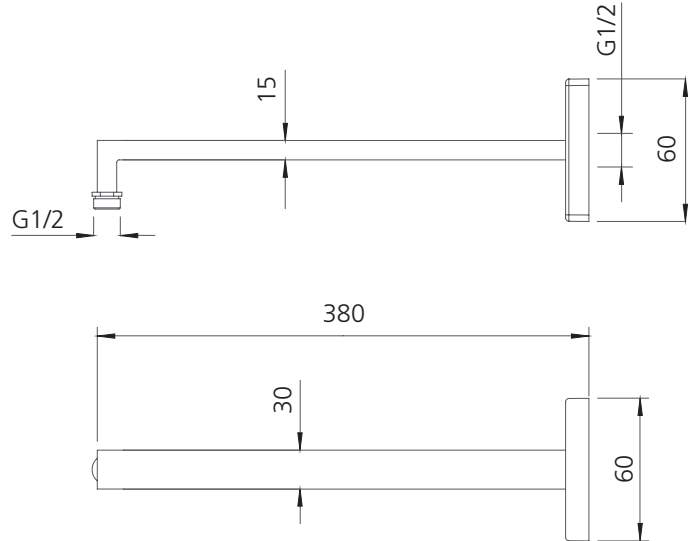
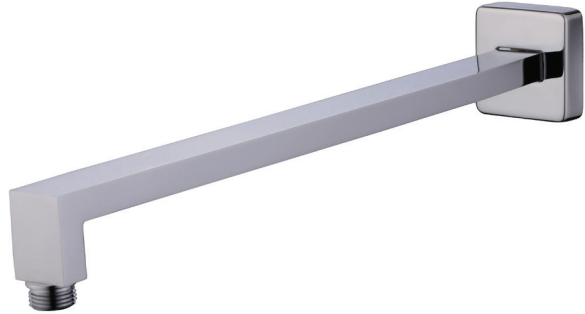


Monaco

MO16330CR

Chrome Wall Mounted Shower Arm

All dimensions in mm



Specifications /

WELs rating	NA
Temperature rating (min / max)	1°C - 65°C
Pressure rating (min / max)	150 kPa - 500 kPa
Finish	Chrome (electroplating)
Materials	Brass
Water supply	Mains
Connections	G 1/2 Female
Mounting methods	Wall mounted
Product weight	0.45kg
Parts List	Shower arm x 1, flange x 1
Warranty	2 years shower arm, 1 year finish and labour (refer to oliveri.com.au)
Maintenance and care instructions	All surfaces should be cleaned with mild liquid detergent or soap and water. Do not use cream cleaners or citrus based cleaning products, as they are abrasive. Use of unsuitable cleaning agents may damage the surface. Any damage caused in this way will not be covered by warranty.