

ARLO

SHOWER / BATH DIVERter MIXER TRIM KIT ONLY

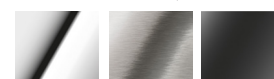
PRODUCT CODE: 151-7940-00
FINISH: CHROME
WELS: N/A

INFORMATION:

TEMPERATURE RATING: MIN 1° - MAX 75°
PRESSURE RATING: MIN 150 kPa - MAX 500 kPa

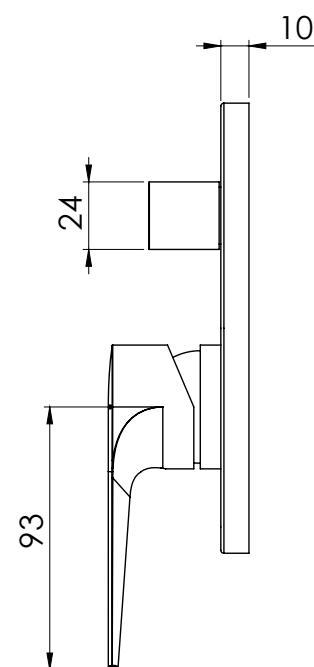
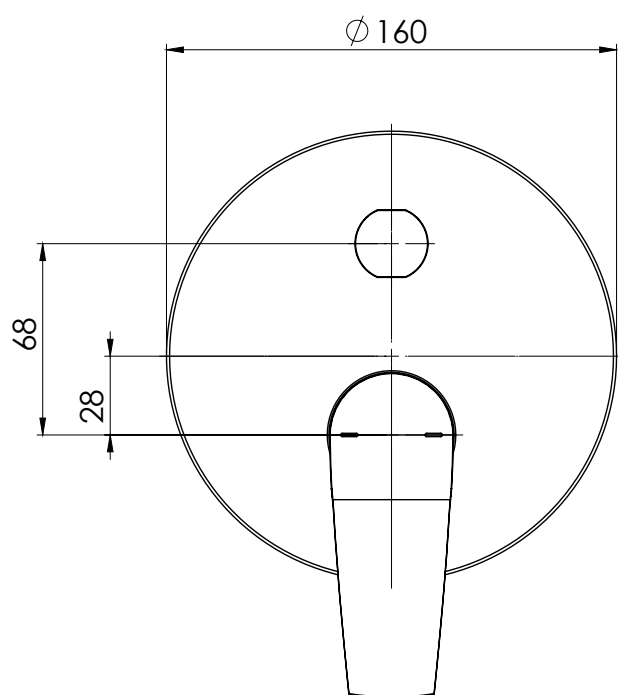


AVAILABLE IN:



CHROME BRUSHED MATTE
NICKEL BLACK

* 1 Year Warranty - Phoenix Builders Matte Black Finish
FOR MORE INFORMATION VISIT
www.phoenixtapware.com.au



PLEASE [CLICK HERE](#) TO VIEW FULL WARRANTY

While we aim to ensure the specifications shown are correct at time of printing, Phoenix Tapware reserves the right to make modifications without prior notice. Always use the physical product measurements for mark-ups and roughing-in as the line drawing shown may differ from the actual product over time. All measurements are shown in millimetres.

Arlo is a Registered Trademark of Phoenix Industries Pty Ltd.

V250220

www.phoenixtapware.com.au
03 9780 4200

ARLO

SHOWER / BATH DIVERTER MIXER TRIM KIT ONLY

PRODUCT CODE:

151-7940-00

FINISH:

CHROME

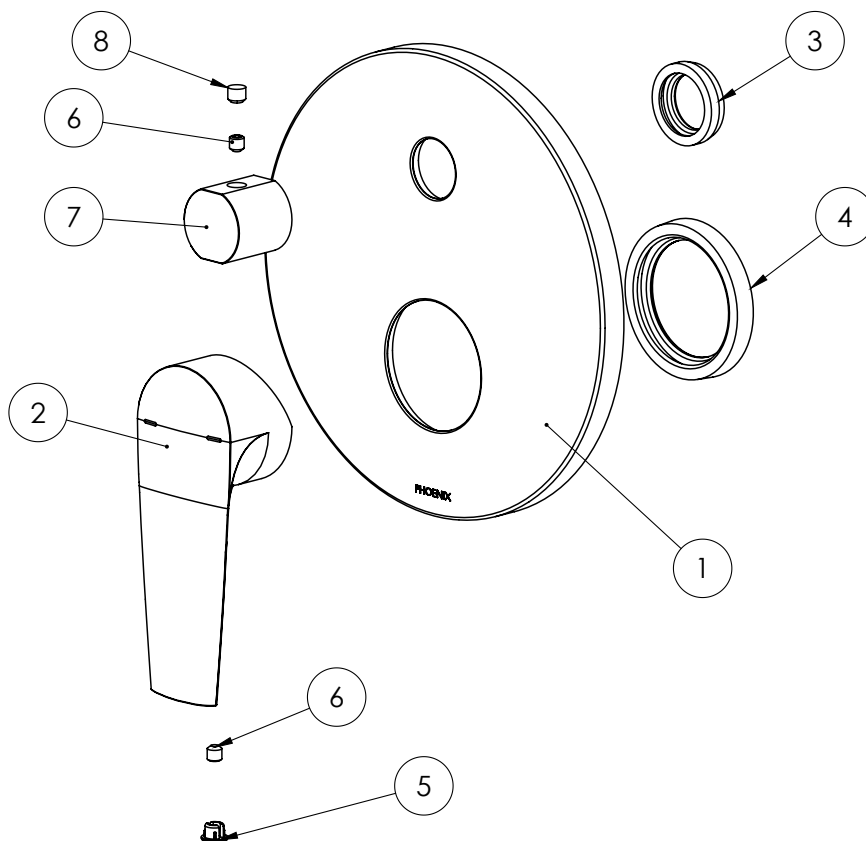
WELS:

N/A



PARTS LIST

1. DRESS PLATE
2. MIXER HANDLE
3. 20MM WASHER
4. 44MM WASHER
5. SCREW CAP
6. GRUB SCREW M5X5
7. MIXER HANDLE
8. RUBBER PLUG



MAINTENANCE AND CARE:

- All surfaces should be cleaned with mild liquid detergent or soap and water.
- Do not use cream cleaners or citrus based cleaning products, as they are abrasive.
- Use of unsuitable cleaning agents may damage the surface. Any damage caused in this way will not be covered by warranty.

PLEASE [CLICK HERE](#) TO VIEW FULL WARRANTY

While we aim to ensure the specifications shown are correct at time of printing, Phoenix Tapware reserves the right to make modifications without prior notice. Always use the physical product measurements for mark-ups and roughing-in as the line drawing shown may differ from the actual product over time. All measurements are shown in millimetres.

Arlo is a Registered Trademark of Phoenix Industries Pty Ltd.

V250220

www.phoenixtapware.com.au
03 9780 4200