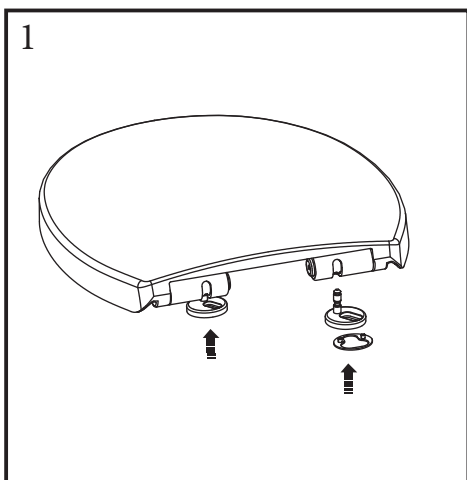
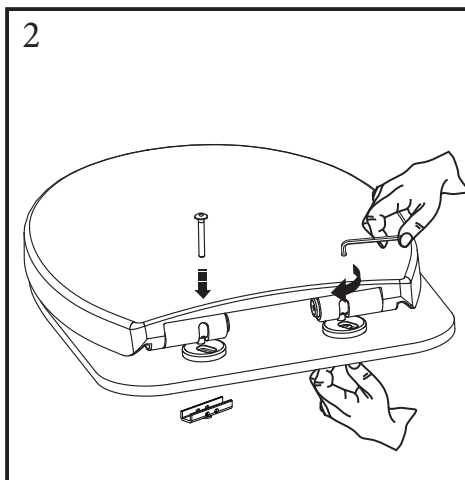


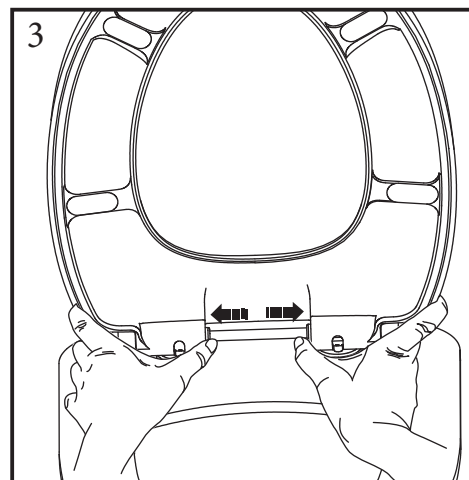
STIRLING Soft Close Toilet seat



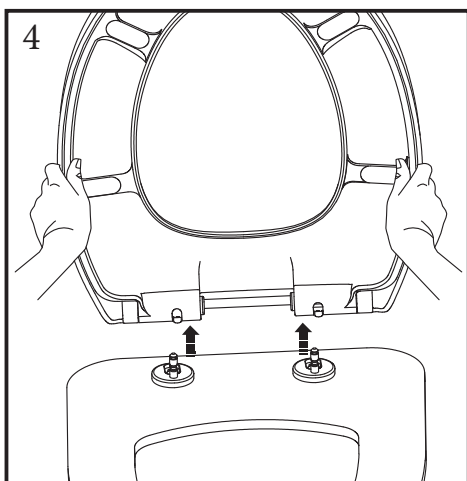
Fix hinge mountings without stainless steel covers to seat.



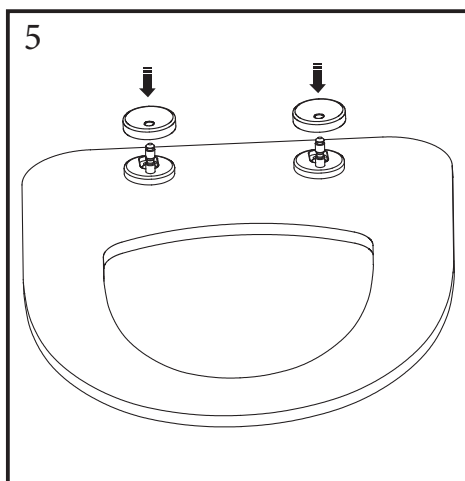
Align seat on pan. Fix hinge mountings to pan using stainless steel screws and toggle provided.



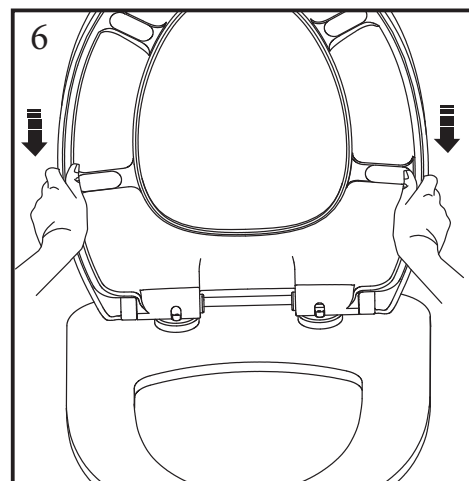
Press the two buttons on the inside of the seat to release seat from hinge mountings.



Pull upwards to lift seat from hinge mountings.



Place stainless steel covers over hinge mountings.



Fix seat back on hinge mountings.

IMPORTANT : Never use abrasive or harsh chemical cleaners. Wipe seat with warm soapy water to maintain surface finish.