

# INSTALLATION GUIDE

## Kwiksemble Vanity Top

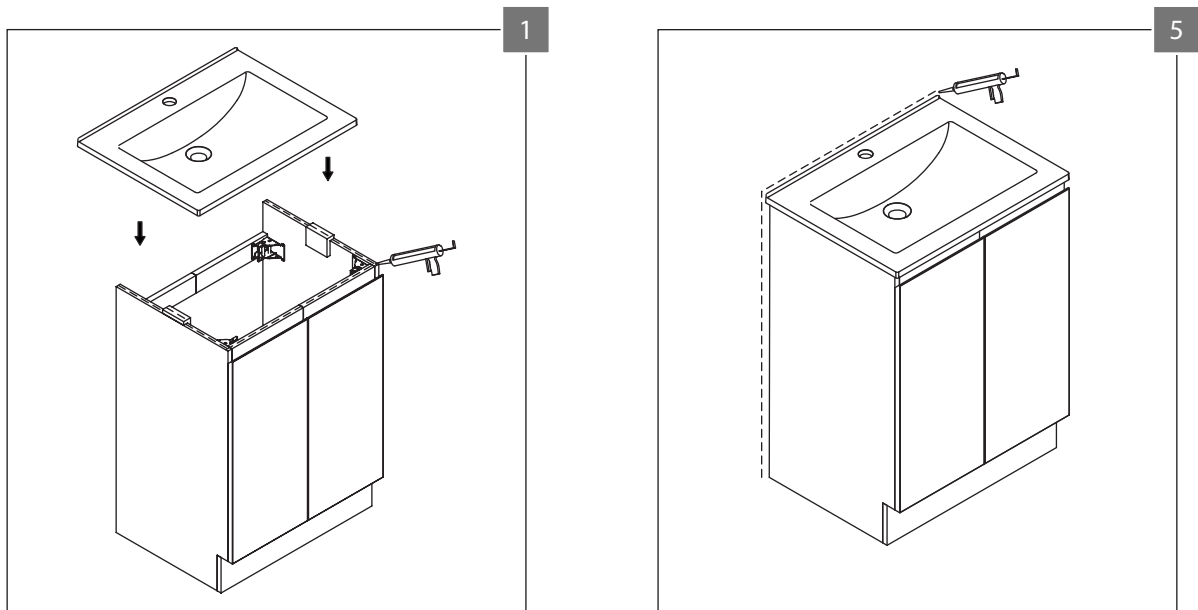
INS KWK VB V1  
14/10/20

### IMPORTANT!

- Prior to installation, all parts and components should be thoroughly inspected for defects. This product will not be warranted if it has been installed with pre-existing defects.
- This product must be installed by a licensed tradesperson.
- All plumbing must be installed by a licensed plumber.
- Under no circumstances should vanities and/or basins be tiled into the wall.

### INSTALLATION

1. Apply an anti-fungal wet area silicone sealant to the top and sides of the vanity to ensure the basin is sealed and fully supported.
2. Carefully lower the basin onto vanity and position it as required. Wipe away excess sealant.
3. Install a basin waste (sold separately) into the basin.
4. Connect the plumbing and test for leaks.
5. Apply an anti-fungal wet area silicone sealant at the back of the basin and sides of the cabinet to ensure water cannot get behind the vanity and cause damage. Allow recommended drying time (refer to sealant instructions) before first use.



### CARE AND MAINTENANCE

- Be mindful of sharp objects that may scratch or damage the surface. Do not tap objects such as shaving razors or toothbrushes etc., against the vanity top.
- Clean with a soft cloth and warm water or a mild detergent. Stubborn stains can be removed with a non-scratch scouring pad and a mild detergent or vinegar followed by a thorough rinse with water. Do not use abrasive cleaners or harsh chemicals.
- Do not place hair dyes, makeup, hot hair dryers or other hot styling equipment directly on the surface of the vanity top to avoid marking and staining.
- Avoid leaving toothpaste or residues from other bathroom products on the surface for extended periods.

Please retain these instructions for future reference.