

DECINA

DISCOVER INDULGENCE

CASCADE FIXED & SWING BATH SHOWER SCREEN INSTALLATION MANUAL

Thank you for purchasing a Decina CASCADE Fixed & Swing Bath Shower Screen **CAFSC**.

Your CASCADE Fixed & Swing Bath Shower Screen is specifically designed to fit Decina Baths with a tile bead. It may be suitable for installation onto other baths but they must have a tile bead. This Fixed & Swing Bath Shower Screen is manufactured from clear 6mm toughened safety glass with chrome fittings. This manual provides the correct steps & care advice for a safe & long lasting installation.



**THIS PRODUCT MUST BE INSTALLED BY A QUALIFIED TRADESMAN
ON A BATH WITH A TILE BEAD.**



- ❗ Unpack & check the item is correct & not damaged. If there are any visible defects do not proceed with the installation & contact the place of purchase immediately. **ANY CLAIMS FOR DAMAGE WILL NOT BE ACCEPTED AFTER INSTALLATION.**
- ❗ Ensure there is a gasket between glass & metal components.
- ❗ Leave the plastic protectors on the glass corners for as long as possible & handle with care.
- ❗ In cold climates, warming the gaskets & seals with hot water or a hairdryer will assist with the installation.
- ❗ A risk assessment should be completed prior to commencing the installation to ensure safe practices are followed for the manual handling of the fragile glass.

SAFETY EQUIPMENT REQUIRED FOR INSTALLATION



☐ Protective Clothing



☐ Foot Protection



☐ Eye Protection



☐ Hand Protection

TOOLS REQUIRED FOR INSTALLATION

ENSURE YOU HAVE ALL TOOLS FOR THE COMPLETE INSTALLATION BEFORE COMMENCING.



☐ Drill



☐ Silicone



☐ Screwdrivers



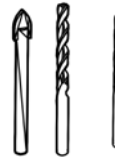
☐ Rubber Mallet



☐ Pencil



☐ 1/4" (6mm) Drill Bit



☐ 1/8" (3mm) Drill Bit



☐ Cutting Pliers



☐ Tape Measure



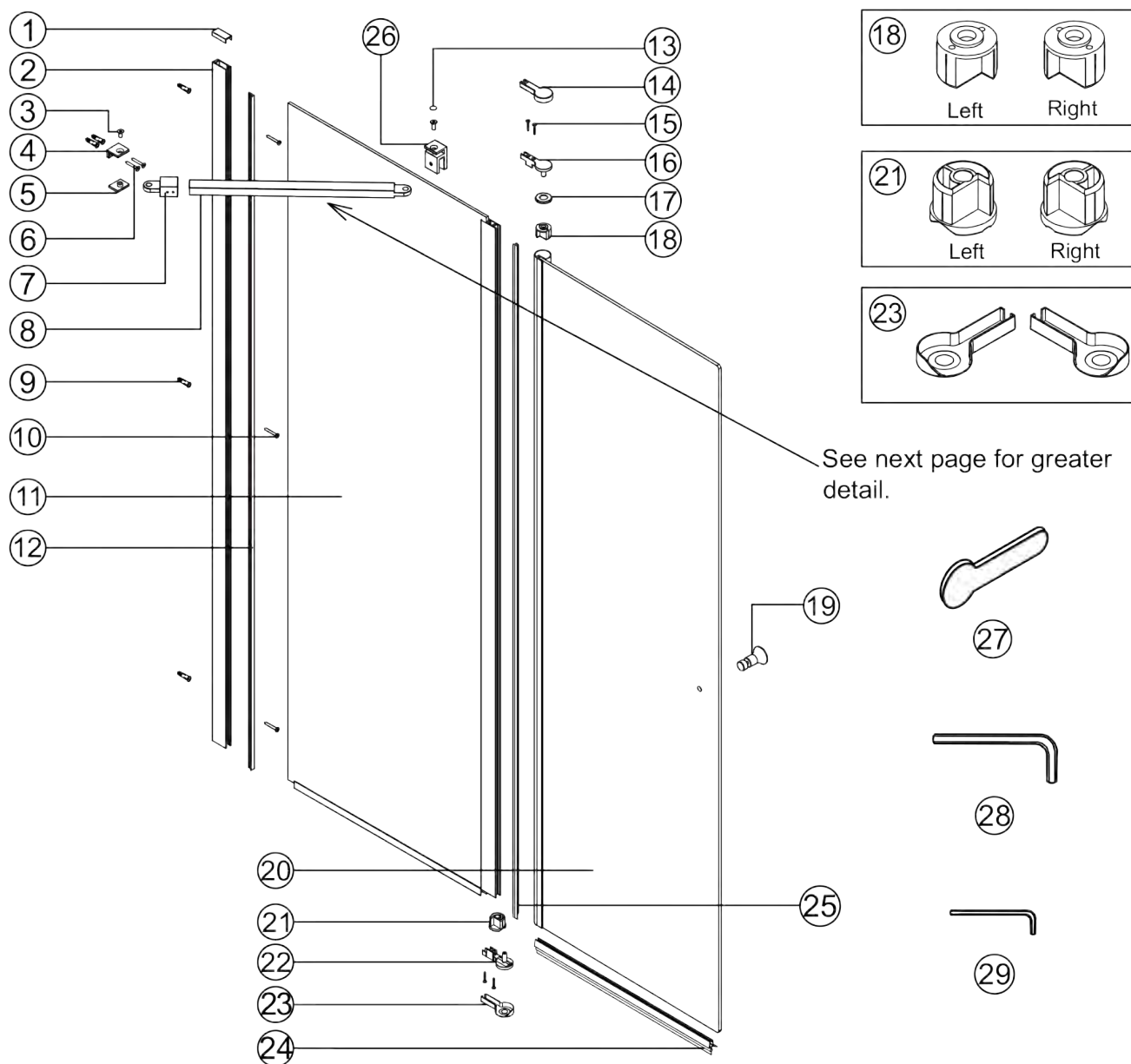
☐ Level



☐ Utility Knife

- Use the correct drill bit for the material being drilled. The 6mm drill bit is required for anchor fixing and the 3mm drill bit is required for screwing directly into the wall studs.
- With all toughened safety glass, take care while handling and wear safety glasses, protective clothing and gloves.

PARTS LIST

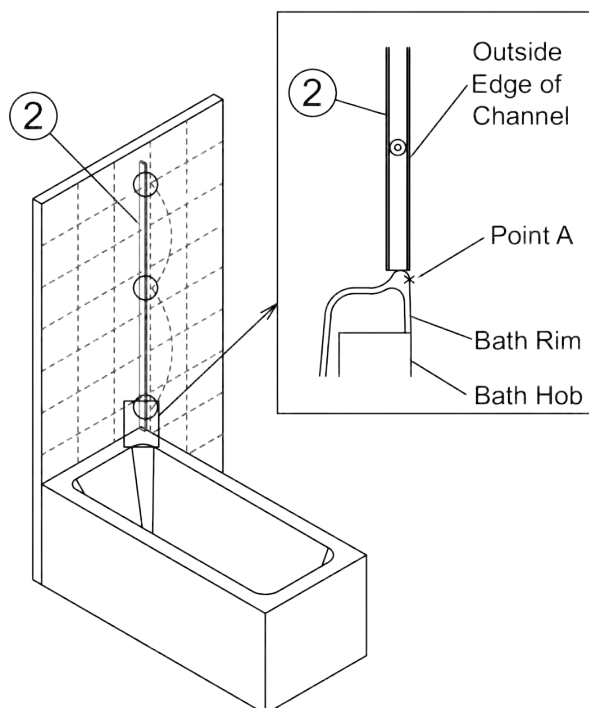


NO.	QTY	DESCRIPTION
1	1	Channel Cap
2	1	Wall Channel
3	2	Countersunk Screw M6 x 12
4	1	Bracket Base
5	1	Clamp Piece of Bracket
6	2	Countersunk Head Screw (ST4 x 30)
7	1	Brace End
8	1	Brace Bar
9	5	Wall Anchor
10	3	Pan-Head Screw (ST4 x 40)
11	1	Fixed Panel
12	1	Wall Channel Gasket
13	2	Screw Cap
14	1	Top Cover
15	4	Countersunk Head Screw (ST3 x 25)

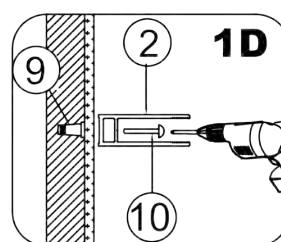
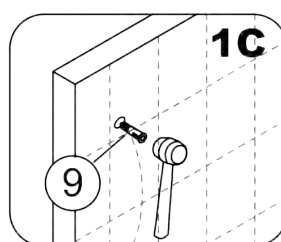
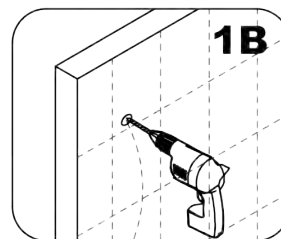
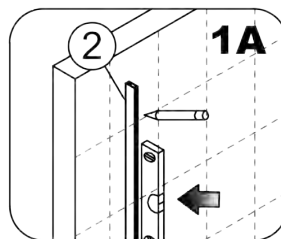
NO.	QTY	DESCRIPTION
16	1	Top Hinge Pin
17	1	Top Shaft Cover
18	1/1	Top Shaft Insert (L/R)
19	1	Handle
20	1	Swing Panel
21	1/1	Bottom Shaft Insert (L/R)
22	1	Bottom Hinge Pin
23	1/1	Bottom Cover with Water Drain Notch
24	1	Drip Strip
25	1	Vertical Water Seal
26	1	Glass Clamp
27	1	Gasket Tool
28	1	4mm Hex Key
29	1	2mm Hex Key

INSTALLATION STEPS

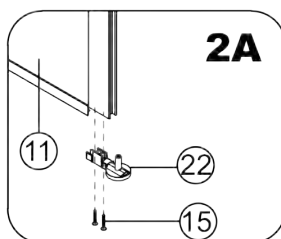
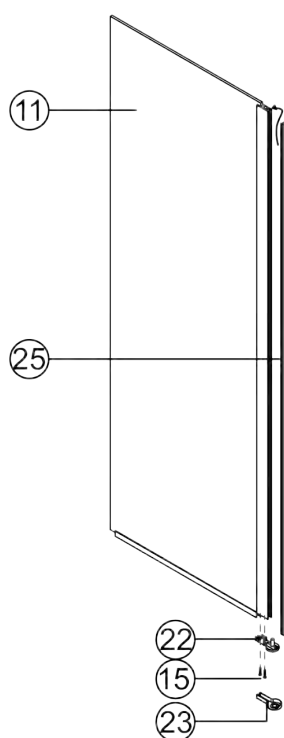
STEP 1. INSTALL THE WALL CHANNEL



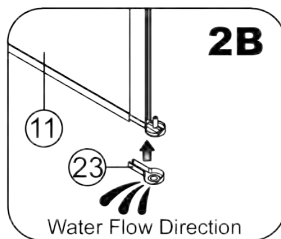
Install the wall channel so it is vertical, and the outside edge is vertically in line with 'Point A' (see drawing).



STEP 2. ASSEMBLE THE FIXED PANEL

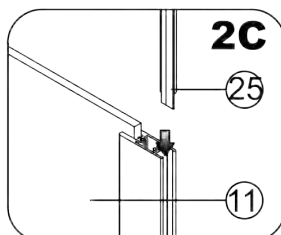


Screw on the bottom hinge pin (plastic).



Slide on the bottom cover (plastic) with the notch for draining water.

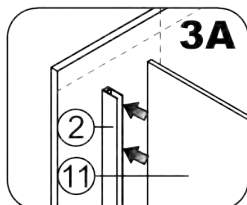
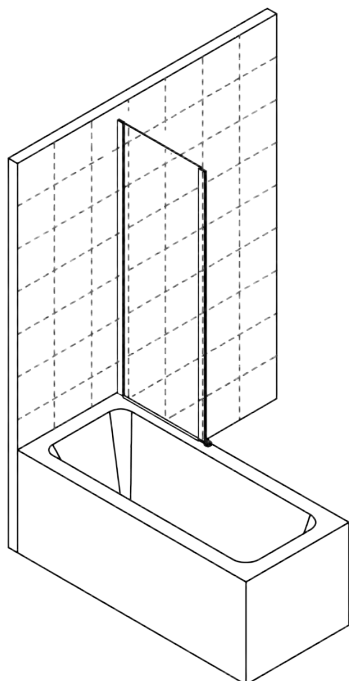
Important: There are two supplied. Choose the one that will place the notch on the bath side. During use, water will run down the channel and come out of the notch.



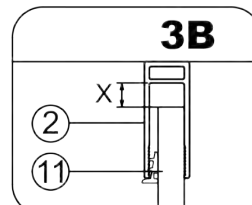
Slide the vertical seal into the channel in the aluminium extrusion. The flap should go on the side opposite of the full, 180 degree folding side. If not the flap will reduce the angle of rotation slightly.

STEP 3. INSTALL THE FIXED PANEL

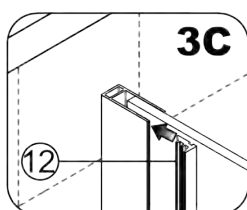
Important: leave the corner protectors on the panel until the last possible moment.



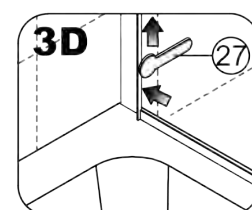
Carefully slide the glass in until the bottom 'H' extrusion on the glass reaches the wall channel extrusion.



This dimension (looking down at on the wall channel) should be 8mm at the bottom and 0-16mm at the top, depending on how level the wall is.



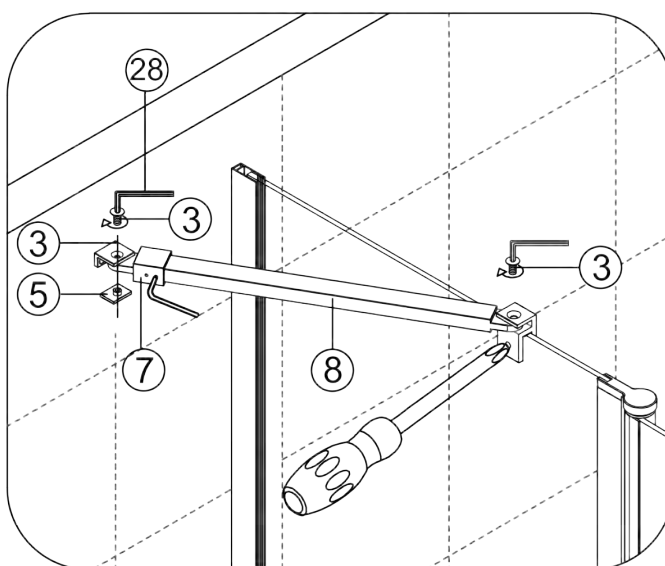
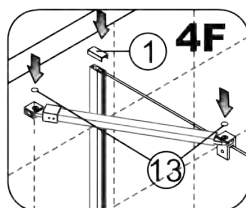
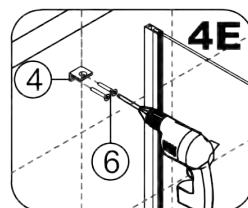
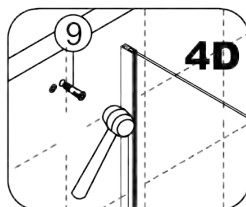
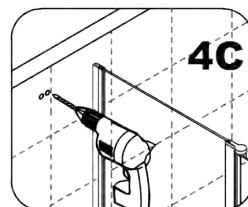
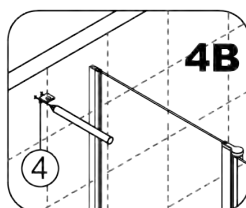
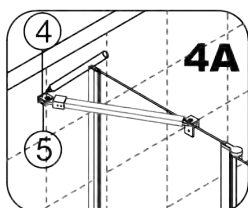
(wet) side of the glass.
The seal goes on the bath



Press the seal all the way into the wall channel, starting at the bottom.

STEP 4. INSTALL THE FIXED PANEL BRACE

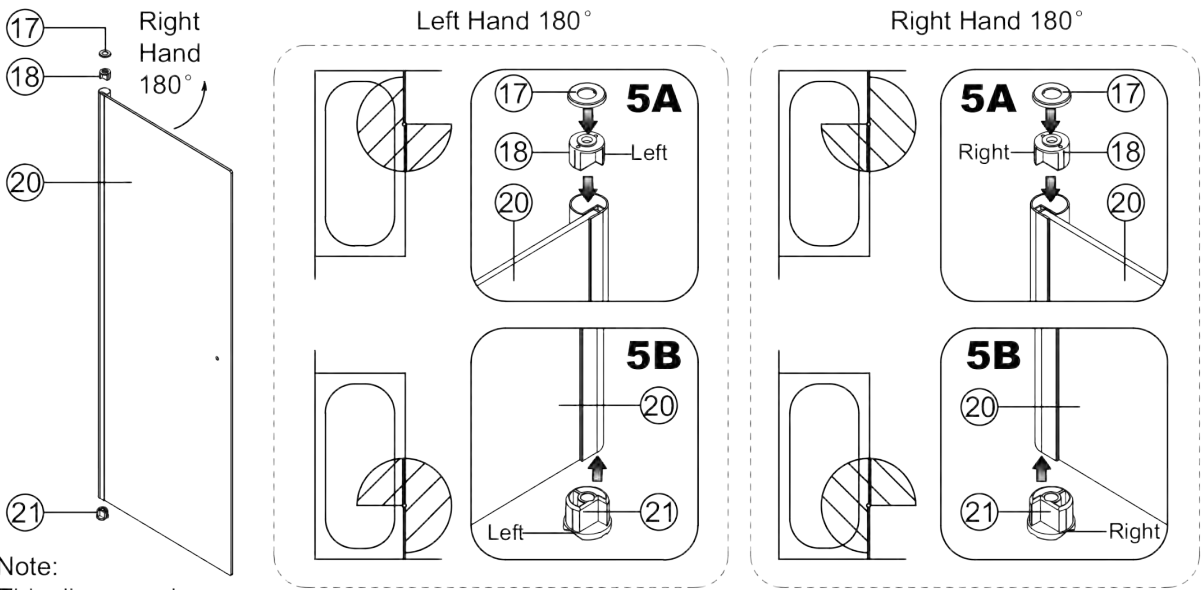
The brace may be installed on either side of the glass to suit the bathroom. Decina recommend that it is installed at a 45 degree angle to the wall and glass.



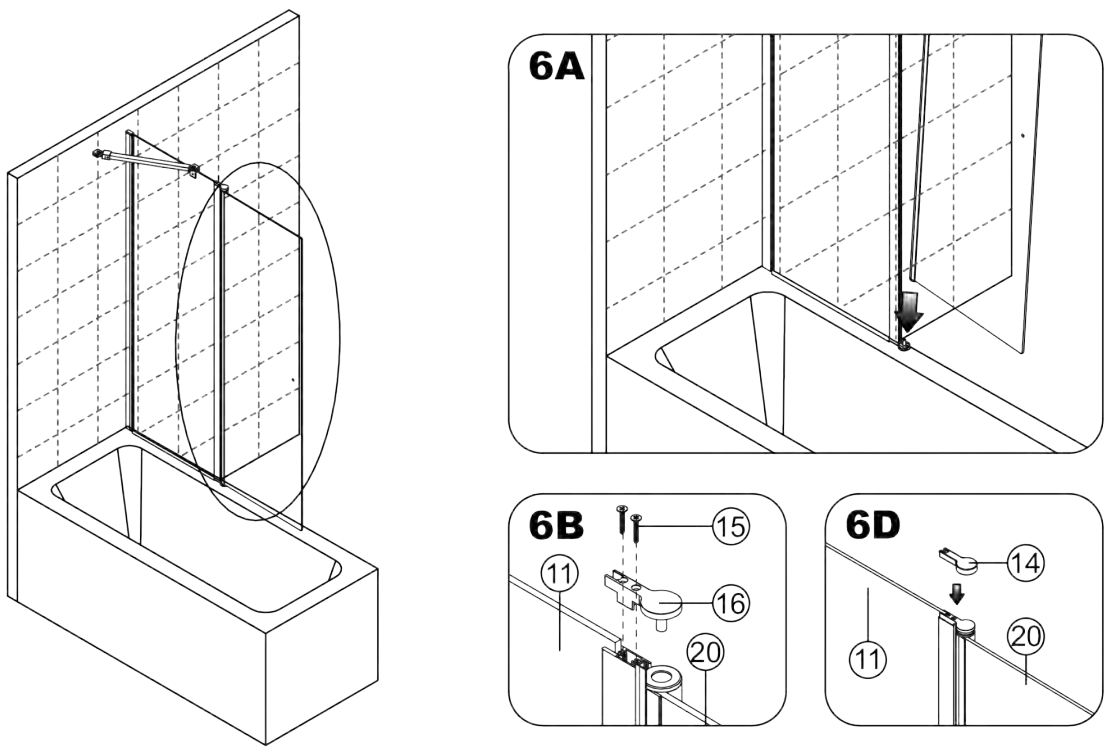
INSTALLATION STEPS

STEP 5. ASSEMBLE THE SWING PANEL

The shaft inserts dictate which way the panel folds fully back (180 degrees). In the other direction the panel will rotate 90 degrees.

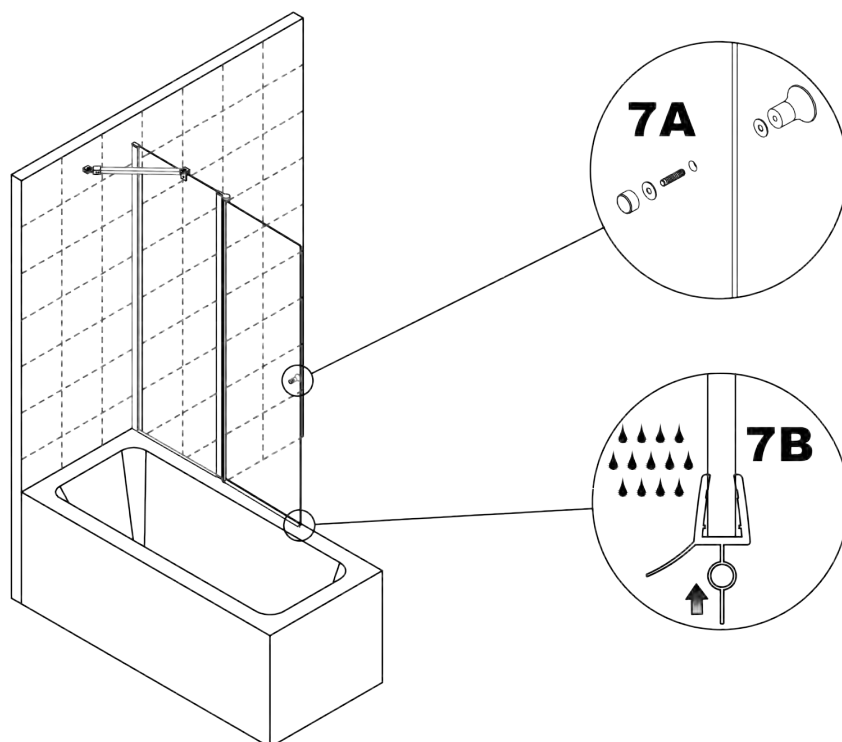


STEP 6. INSTALL THE SWING PANEL

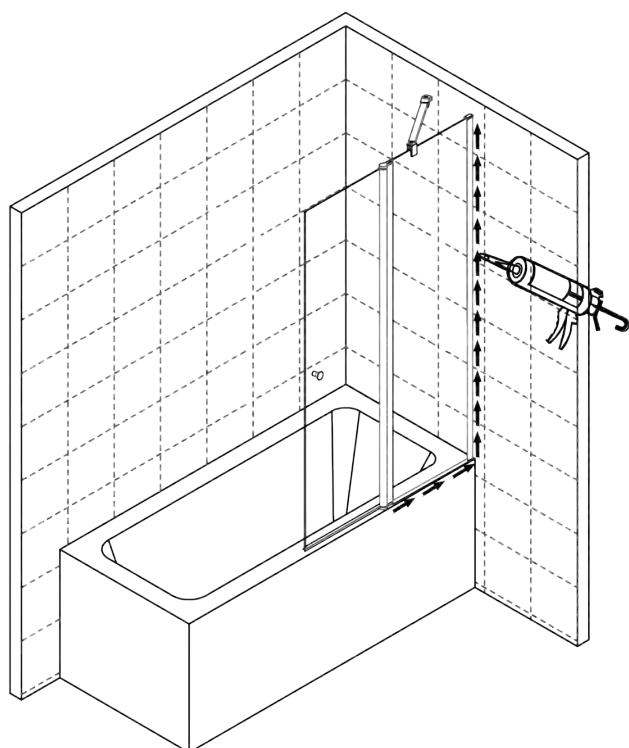


INSTALLATION STEPS

STEP 7. INSTALL THE DRIP STRIP & HANDLE



STEP 8. APPLY SILICONE



Silicone the inside and outside of the shower, and allow 24 hours before use.

MAINTENANCE

The use of harsh or abrasive cleaners will cause deterioration of the EZI CLEAN glass coating. If water alone is not enough to clean the glass, Decina recommends the use of mild detergent solutions only.

WARRANTY TERMS & CONDITIONS

All Decina products are manufactured to the highest standards and guaranteed to be free of defects, subject to the conditions outlined below. In addition to the statutory rights given under Australian Consumer Law, Decina offers the following extended warranty periods from the date of purchase or handover:

PRODUCT	WARRANTY	TERMS
CASCADE Fixed & Swing Bath Shower Screen	5 YEARS	Replacement Products or Parts

The Decina warranty is only applicable when the product has been installed by a qualified tradesman, on a suitable bath with a tile bead & in full accordance with the installation instructions & statutory requirements.

The warranty specifically EXCLUDES damages discovered AFTER installation.

The Decina warranty is only applicable when the product has been installed by a qualified tradesman, on a suitable bath with a tile bead and in full accordance with the installation instructions and statutory requirements. The warranty specifically EXCLUDES damages discovered AFTER installation.

Decina's responsibility for claims relating to impact damage ceases within 48 hours after delivery to the Decina re-seller's store.

The extended warranties only apply to faults or defects in the product arisen solely from faulty materials or workmanship in the products and does not apply to other defects for example from; damage, abuse, neglect or changes to the product supplied.

The warranty only extends to the supply of a replacement product or credit to the value of the purchase and excludes consequential damage ensuing from the product application or use. The responsibility for the removal and replacement of the product is with the installer and/or owner. Where the manufacturer "Decina" accepts that the product is at fault, the maximum contribution to the removal and replacement costs will be \$500.

Repairs of the Products other than by a Decina accredited or licensed service agent or technician are not covered.

In addition to this extended warranty, certain legislation (including the ACL) may give you certain rights which cannot be excluded, restricted or modified, this extended warranty must be read subject to such legislation and nothing in this warranty has the effect of excluding, restricting or modifying those rights.

To make a warranty claim, please visit the Decina website decina.com.au/warranty-claim/ or email services@decina.com.au and attach the following documentation:

- Proof of purchase (original invoice from the supplier)
- Details of the warranty claim including the date of installation, installer's details and head contractors
- Your contact details

If the Product has not been installed, please contact Decina to inspect the Product. If the claim is accepted, the Product can be returned or exchanged. Note: The extended warranty only applies to the original owner and is not transferable. Decina reserves the right to charge a service fee for any staff called to attend premises where products have been installed and the warranty claim is not authorised.

Copyright March 2020. Decina Bathroomware Pty Ltd. ABN 39845 084 033

PLEASE LEAVE THIS MANUAL WITH THE END USER

DECINA
DISCOVER INDULGENCE

DECINA.COM.AU 1300 DECINA



All dimensions are nominal & subject to manufacturing tolerances & may vary +/-5mm, therefore we strongly recommend installation does not occur until after delivery. Decina reserves the right to modify or change models without notice. For further information and for warranty T&C's, please visit decina.com.au