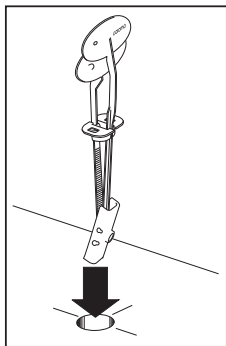


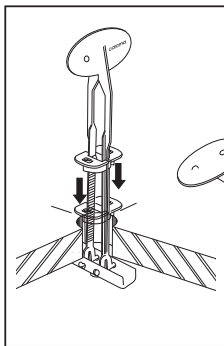
TOILET SEAT

with Stainless Steel Blind Fixing Hinge

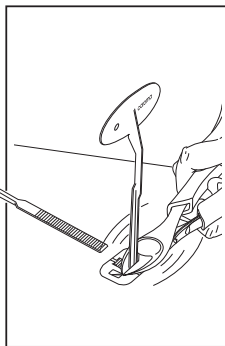
INSTALLATION INSTRUCTIONS



1. Push metal toggle through pan hole.

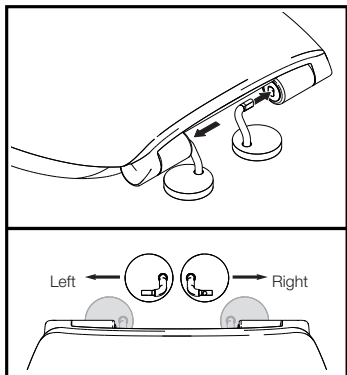


2. Realign handles and pull upwards while pushing locking bush down into pan hole.

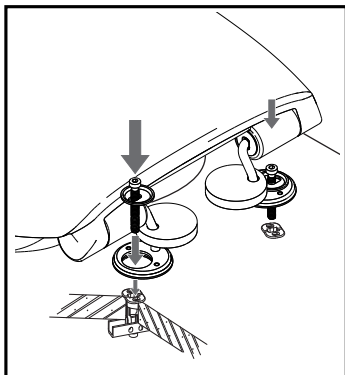


3. Carefully break off handles as close as possible to locking bush.

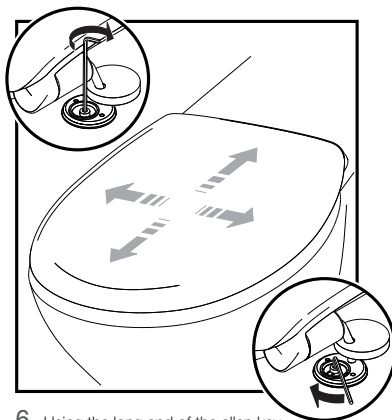
PTO to continue
installation.



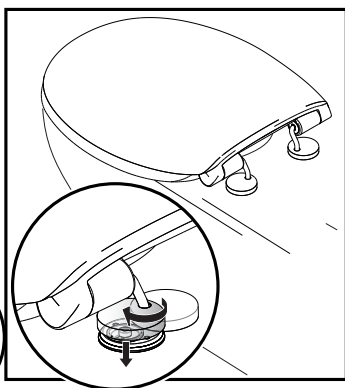
4. Locating left and right hinge posts in back of seat (diagram A).



5. Place inserts in mounting holes. Drop screws through inserts and into blind fixing.



6. Using the long end of the allen key provided wind in screw before making any final adjustments to the seats position and firmly tightening with the short end.



7. Rotate covers over inserts and firmly press down onto concealed fixing.