



## AVK RESILIENT SEAT GATE VALVE PN16, HANDWHEEL

570/98

To AS 2638.2, reduced weight and environmentally friendly  
 Stem sealing exchangeable under pressure  
 Face to face dimension to AS 2638.2  
 Flange and drilling to AS 4087 Figure B5 (AS 2129 Table D and raised face) or AS 2129 Table E and raised face

### Use:

- For water, sewage and neutral liquid applications
  - Valve designed for use up to 70°C
  - Where applicable; for AS 4020 compliance, max temp = 40°C
- Note: Always observe pipe material recommended operating temperatures

### Tests:

- Hydraulic test to AS 2638.2:
  - Seat: 17.6 bar
  - Body: 24 bar
  - Operating torque test

### Optional Extras:

- Stem cap (refer to series 570/90)
- ISO flange for gearbox/actuation (refer to series 570/92)



DN80, 100



DN225, 250, 300, 375, 400



DN150, 200



Quality  
ISO 9001  
SAI GLOBAL



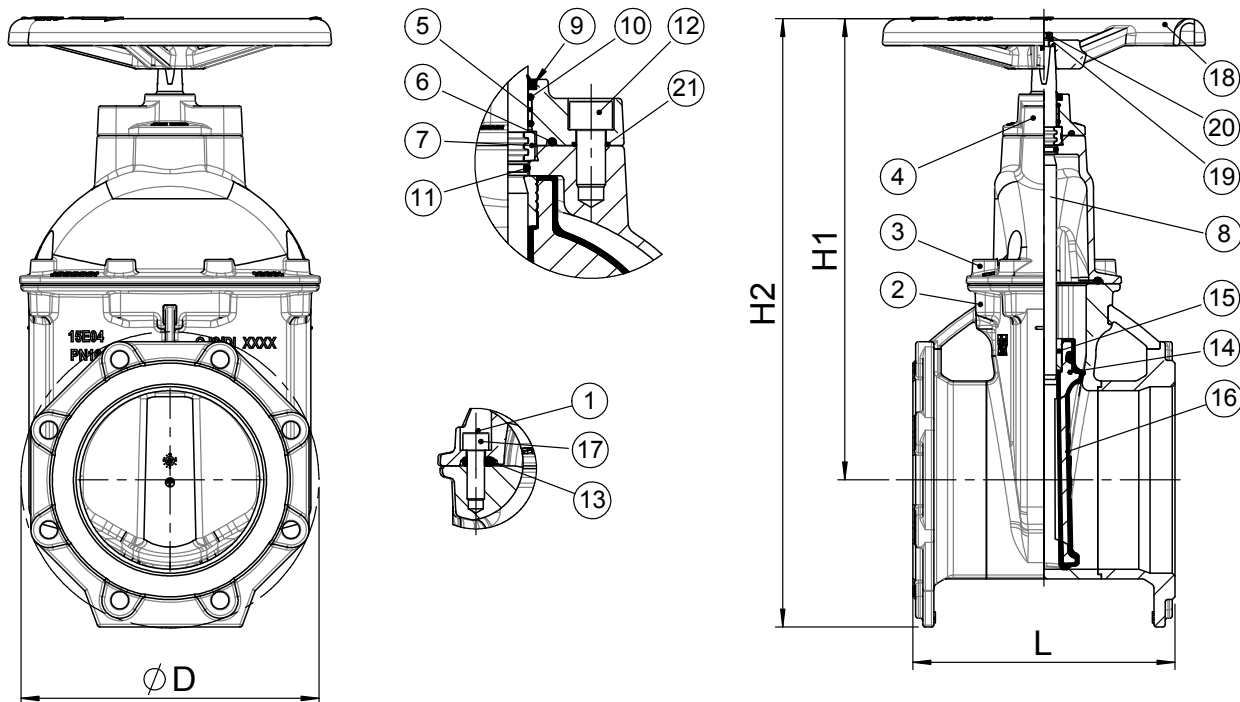
Health & Safety  
AS 4801  
SAI GLOBAL



Environment  
ISO 14001  
SAI GLOBAL



Australian  
Standard  
AS2638.2  
Lic. SMK02420  
SAI Global  
WaterMark



**Component list**

1. Hot melt seal		13. Bonnet gasket	EPDM rubber
2. Body	Ductile Iron, 500-7 to AS 1831	14. Wedge	Ductile Iron, 500-7 to AS 1831
3. Bonnet	Ductile Iron, 500-7 to AS 1831	15. Wedge nut	Dezincification resistant brass, CZ 132 to AS 2345
4. Gland flange	Stainless Steel CF8M	16. Wedge rubber	EPDM
5. Bushing	Polyamid	17. Bolt socket	Stainless Steel 316, fully encapsulated with hot melt glue
6. O-ring	NBR	18. Handwheel	Ductile Iron, 500-7 to AS 1831, 35mm cap square
7. Thrust collar	Dezincification resistant brass, CZ 132 to AS 2345	19. Washer	Polypropylene
8. Stem	Stainless Steel 431	20. Bolt hex	Stainless Steel 316
9. Wiper ring	NBR	21. O-ring	NBR
10. O-ring	NBR		
11. O-ring	NBR		
12. Bolt socket	Stainless Steel 316, fully encapsulated with hot melt glue		

Components can be substituted with equivalent or higher class materials.

**Reference nos. and dimensions - Flange drilling to AS 4087 Figure B5 (AS 2129 Table D)**

AVK ref. nos. CC	AVK ref. nos. ACC	DN mm	L mm	H1 mm	H2 mm	D mm	Hole OD mm	Holes nos.	Bolt PCD	Stem SQR	Handwheel OD mm	Weight kg
Refer 57/98 Datasheet		50*										
Refer 57/98 Datasheet		65*										
570-080-980540120	570-080-981540120	80	203	317	390	190	18	4	146	19	280	15
570-100-980540120	570-100-981540120	100	229	340	423	218	18	4	178	19	280	18
570-150-980540120	570-150-981540120	150	267	423	565	285	18	8	235	19	280	34
570-200-980540120	570-200-981540120	200	292	517	682	332	18	8	292	24	360	56
570-225-980540120	570-225-981540120	225	305	604	789	370	18	8	324	27	500	94
570-250-980540120	570-250-981540120	250	330	617	819	405	22	8	356	27	500	100
570-300-980540120	570-300-981540120	300	356	700	927	455	22	12	406	27	500	133
570-375-980540120	570-375-981540120	375	381	863	1138	550	26	12	495	32	640	240
570-400-980540120	570-400-981540120	400	406	875	1165	580	26	12	521	32	640	251

\* Not specified in AS 2638.2

**Reference nos. and dimensions - Flange drilling to AS 2129 Table E**

AVK ref. nos. CC	AVK ref. nos. ACC	DN mm	L mm	H1 mm	H2 mm	D mm	Hole OD mm	Holes nos.	Bolt PCD	Stem SQR	Handwheel OD mm	Weight kg
Refer 57/98 Datasheet		50*										
Refer 57/98 Datasheet		65*										
570-080-980540120	570-080-981540120	80	203	317	390	190	18	4	146	19	280	15
570-100-980640120	570-100-981640120	100	229	340	423	218	18	8	178	19	280	20
570-150-980640120	570-150-981640120	150	267	423	565	285	22	8	235	19	280	34
570-200-980640120	570-200-981640120	200	292	517	682	332	22	8	292	24	360	56
570-225-980640120	570-225-981640120	225	305	604	789	370	22	12	324	27	500	94
570-250-980640120	570-250-981640120	250	330	617	819	405	22	12	356	27	500	100
570-300-980640120	570-300-981640120	300	356	700	927	455	26	12	406	27	500	133
570-375-980540120	570-375-981540120	375	381	863	1138	550	26	12	495	32	640	240
570-400-980540120	570-400-981540120	400	406	875	1165	580	26	12	521	32	640	251

\* Not specified in AS 2638.2